

Re-Treading New Ground

**Tire Shred For Leachate Drainage In Landfills:
A Landfill Managers Perspective**



- Re-establishing leachate collection system per original design intentions

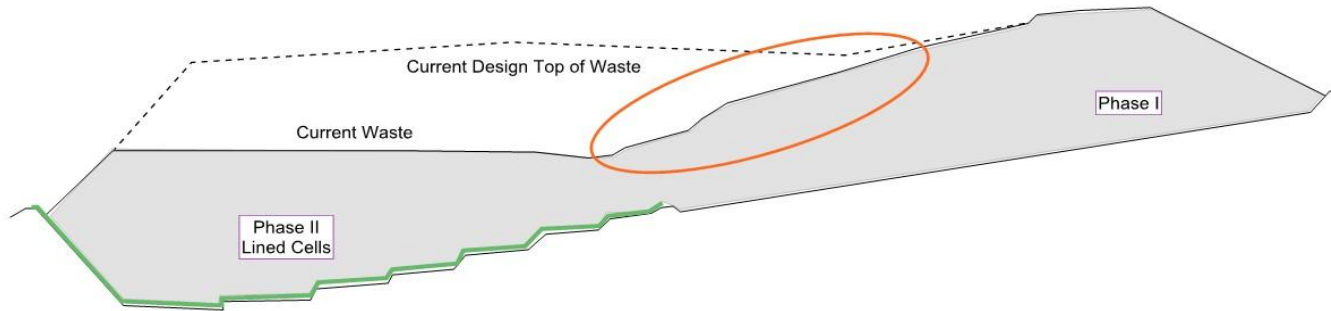


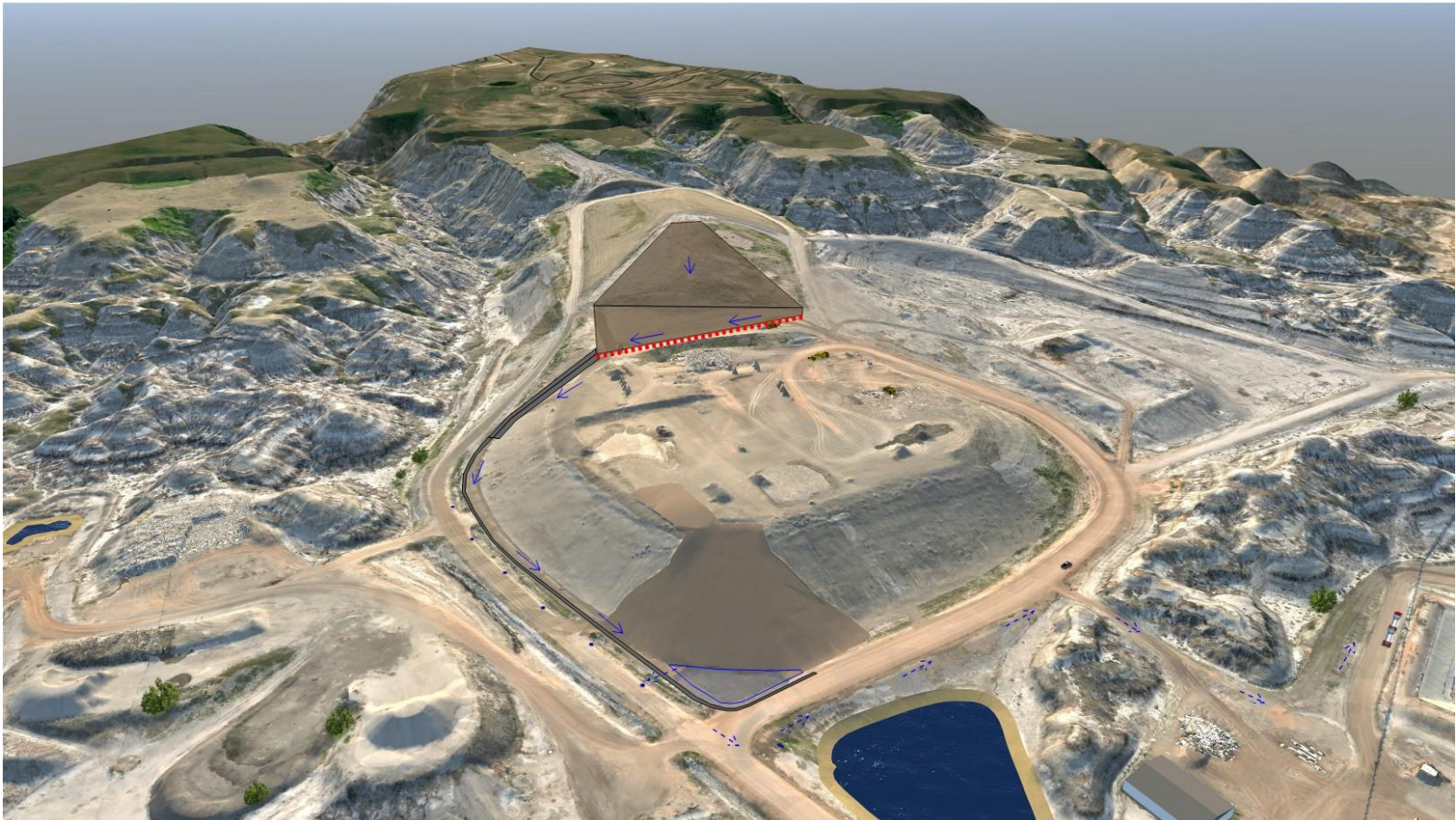
- Re-using tire shred from original construction (2008) to promote leachate drainage



- Light geo-textile placement over tire shred
- Aggregate (beyond dinosaur bones) is not abundant in Drumheller area
- Tire shred is used as an alternative to traditional aggregate that could be used in other applications
- Through ARMA tire recycling program, tire shred is cost effective







- Tire shred used in leachate drainage trench to promote drainage towards existing leachate collection system
- Will adjust to landfill settlement
- Cost effective, readily available, suitable disposal option