



**Claystone**  
Waste Ltd

**April 24, 2026**

# **Ashes, Asbestos, and Albertans: Clearing the Way for Jasper's Return Home**



# The fire begins – July 2024

## **7:02 pm July 22**

*Fire first reported near the Jasper Transfer Station*

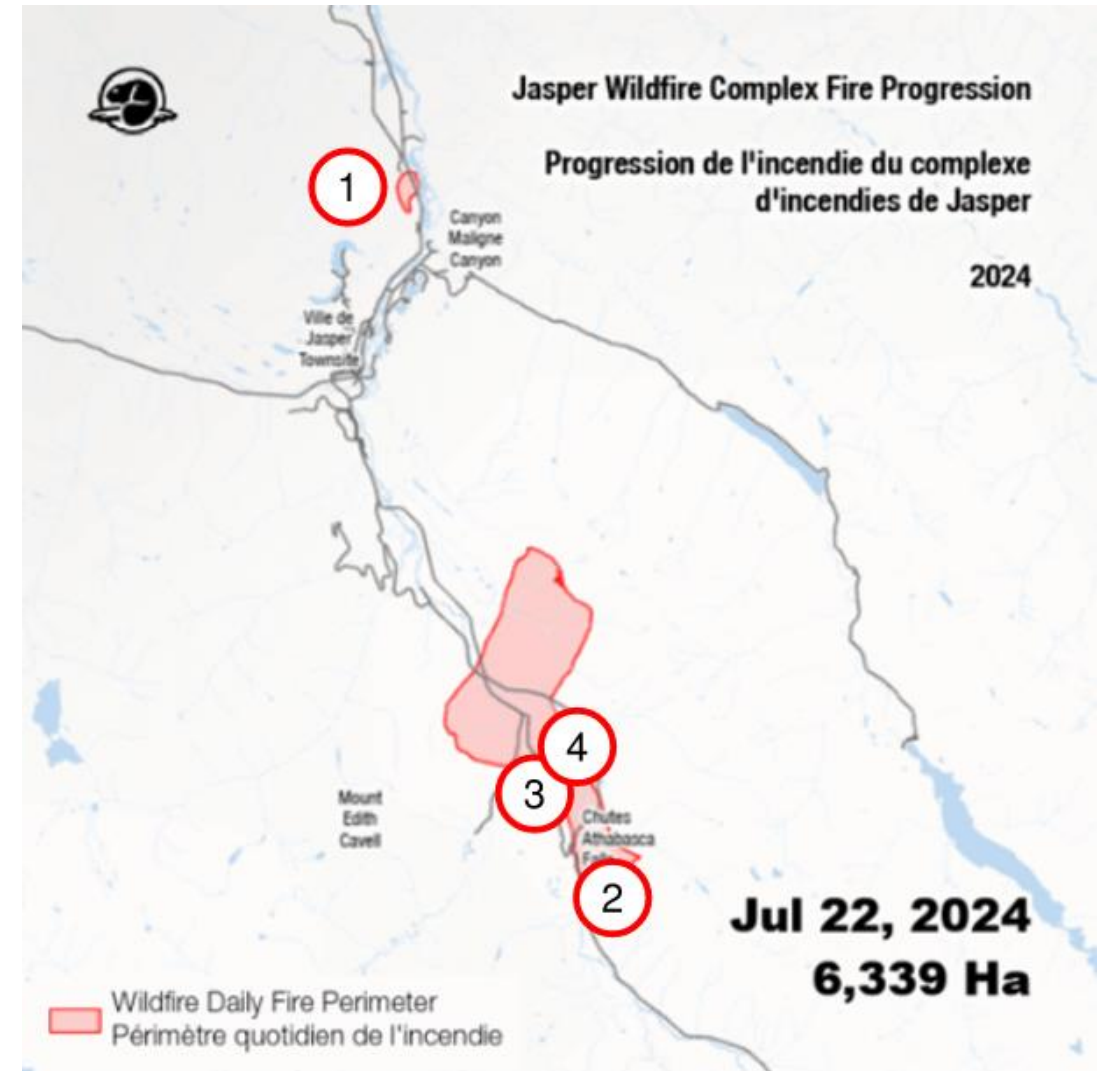
## **7:10 pm July 22**

*Fire reported near Kerkeslin Campground*

## **7:20 pm July 22**

*Fires reported near two other campgrounds*

**6,339 Ha in the first few hours**



*Adapted from Parks Canada*



# Firestorm

The fire is so strong it causes nearly tornado-level winds, uprooting trees and throwing flaming debris 500m ahead of the main body.



*Near Wabasso Campground (Parks Canada)*

# The fire reaches Jasper townsite

## Approx. 6:00 pm, July 24

Fire climbs across Whistler's Mountain and is blown into town by Westerlies from the Miette Valley

Firefighters battle bravely, but by 8pm the smoke is so thick and toxic they have to make tough decisions and save what they can.



*Adapted from Parks Canada*

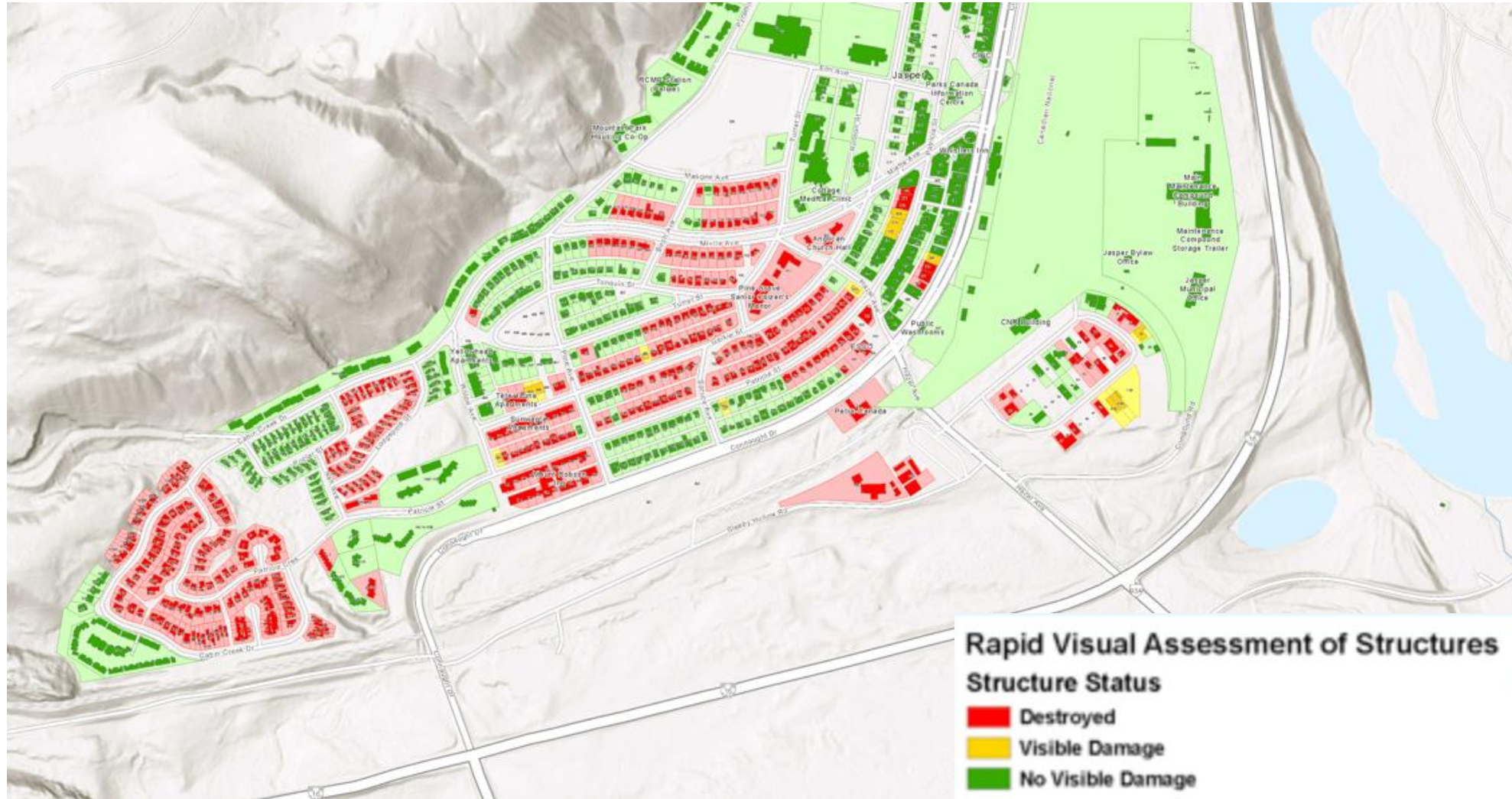
**30% of the structures in the town  
are destroyed by morning.**

More than 3,000 firefighters and other  
personnel are needed to contain the fire.

It takes 6 more weeks to control.  
More than 33,000 hectares burn.

**1 life is tragically lost.**

# Visual Damage Assessment



# Cabin Creek Dr. – West edge of town



# Turret St. near Maligne Ave.



# Geikie St. toward Patricia St.



# Before rebuilding, removal

- 358 structures destroyed/requiring cleanup
- Multiple phases
- First phase approx. 70 residential properties
- Time of the absolute essence to begin reconstruction
- Demolition contractors subject to stringent supplemental mitigation measures because of...

# Supplemental mitigation



# The need for more outlets

- 3 weeks to ship thousands of tonnes of potential asbestos-containing material (ACM) – multiple landfills involved
- Claystone capacity required to meet removal timeline
- Safety of both workers and the public **paramount**
- *We need to find a way to take this safely, efficiently, and starting almost immediately*

***Pathway to yes mindset***

# An operational pivot

- Traditional asbestos handling methods required appointments, scheduling
  - Not compatible with imprecise timing of cross-province driving in spring weather
- Trained inspection capacity on site was limiting
  - Train more inspectors on site; growth opportunity for staff
- Are we using equipment in an optimal way to handle and cover ACM in general?
  - What could we do to improve?
  - What other pieces of equipment do we need?

# **How Claystone did it – in full detail**

# How Claystone did it – in full detail



AI generated imagery (ChatGPT)

# Key operational measures

- Multiple parallel inspection activities concurrently
  - Off-face, on-face activity
- Zero outside-equipment presence within exclusion zone
- Segregated working areas away from conventional tipping face
  - Wind direction considered at all times
  - Dust mitigation via on-site leachate truck in case of bladder rupture
  - Advance preparation to minimize post-dump coverage work
  - Multiple cover material stockpiles in key locations near face
- All equipment HEPA-filtered and periodic asbestos fiber pump testing to confirm zero exposure
- Digital tagging of material deposits via GPS – future risk mitigation

The most important questions of the entire project:

**“What do you need?”**

**“What if?”**

**“Does what we’re doing pass a core value check?”**

# The result

- On time (slightly ahead of schedule)
- On budget
- Carriers able to backhaul needed material anyway – offset the long round trip
- Helped our fellow Albertans prepare to get back on their feet

# Summer 2025



# Summer 2025



# In memoriam



MORGAN KITCHEN  
JULY 23, 2000 - AUGUST 3, 2024



**Thank you!**

---