

# Rooting Success

## TAILORING COMMUNICATIONS FOR REMOTE LANDFILL OPERATIONS

**Manto Sipi Cree Nation & God's Lake First Nation,  
Manitoba**

**SWANA NLC 2026 Conference**

Prepared by: Mario Poveda  
Credits: Stuart King, Stan Lozeczniak & Keith Luo

# FROM COAST TO COAST



Platinum member

**BEST MANAGED**  
Awarded as one of  
Canada's Best Managed  
Companies 17 years in a  
row!



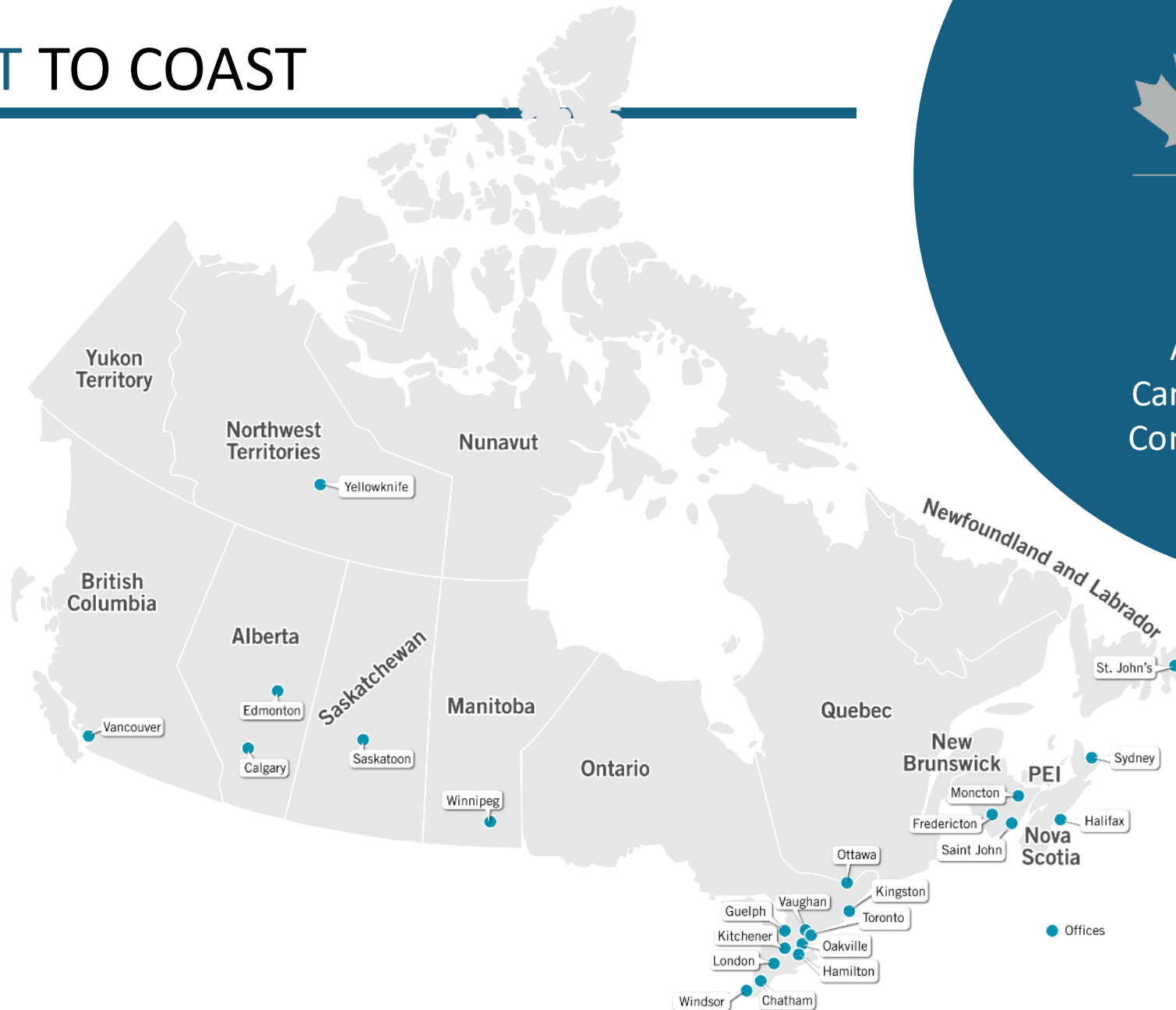
## LOCATION

Over 25 offices across  
Canada to serve you



## HISTORY

Founded in 1946  
in London, Ontario



SWANA NLC Conference 2026 - Calgary, AB



# THE PARADIGM SHIFT



# COMMISSIONED ≠ READY



Technical "sign-off" happens on paper, but operational readiness happens in the mind.

- **The Gap:** Equipment was installed and commissioned.
- **The Reality:** Staff did not know how to operate the station.
- **Lesson:** Paperwork doesn't protect workers; site-specific training does.

# THE "WHY" WORKSHOP

## Fostering Buy-In

**Water Protection:** Linking leachate management to local fishing grounds.

**Community Health:** Environmental and generational impacts.

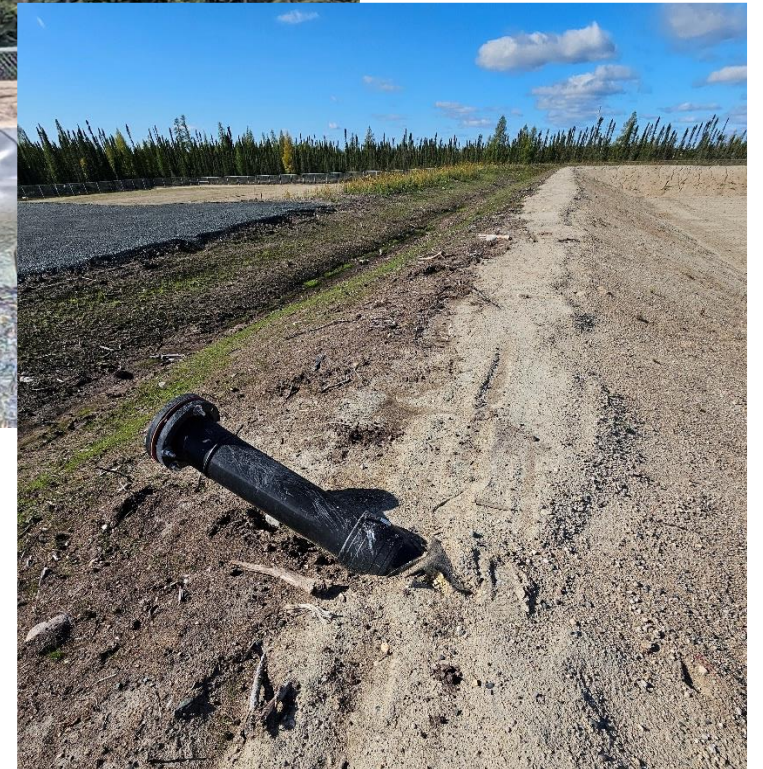
**Cultural Relevance:** Uphold community values.



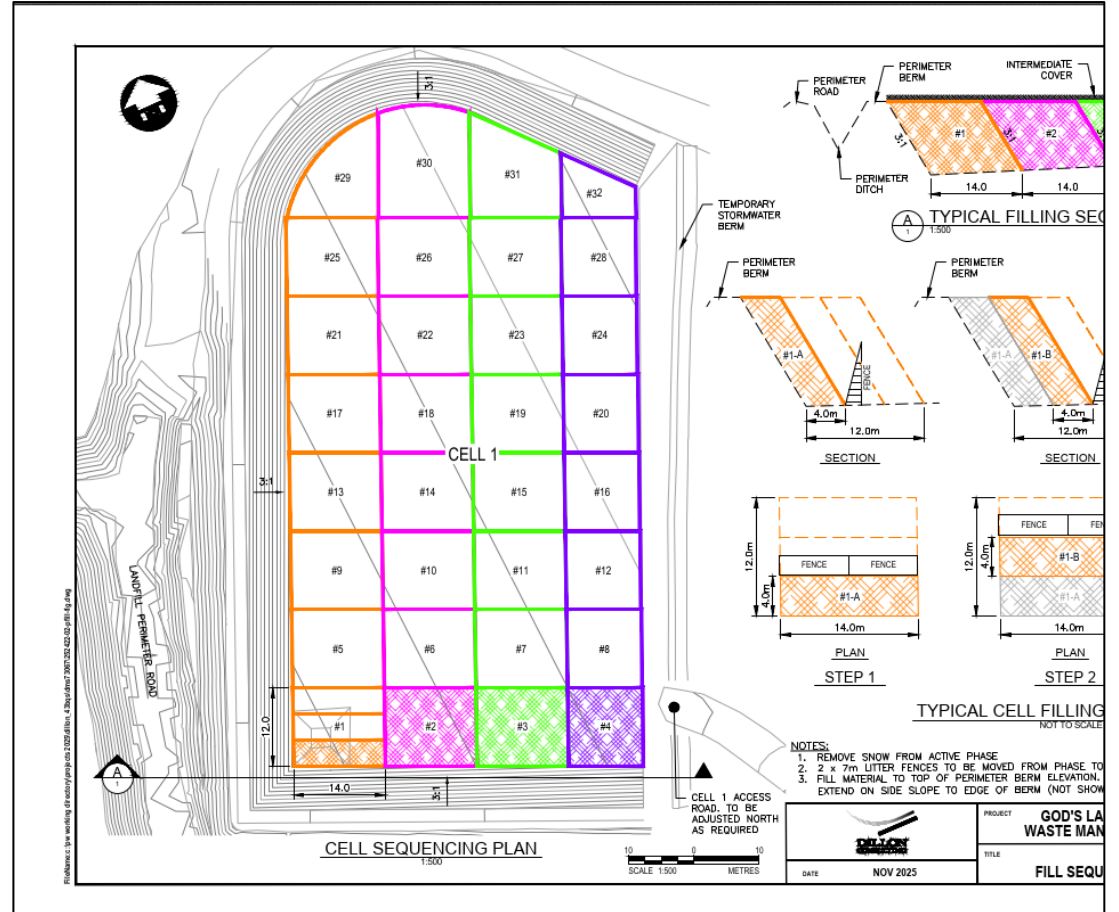
# "AHA!" MOMENT AT THE MANHOLE

## Infrastructure Insight

Discussing leachate pipes in class is one thing; standing at the manhole and visualizing the flow is where the "click" happens.



# UNDERSTANDING THE PLAN



An aerial photograph of a large-scale construction or industrial site. A long, winding road or path cuts through a dense forest of tall, thin trees. The site itself is a cleared area with various structures, including a large white rectangular building, several smaller buildings, and a large pile of earth or debris. There are also some vehicles and equipment visible on the site. The sky is overcast with some light clouds.

# Seeing the Results

A transition from dispersed waste to operational excellence.

# INITIAL STATE



- Dispersed waste placement.
- Windblown litter.
- Lack of distinct active face.
- Poor compaction = wasted capacity.

# ROOTED SUCCESS



- Small Active Face.
- Improved Compaction.
- Litter Control.
- Ownership: Technicians managing an asset.

# 2025 IMPACT: DIVERSION & BACKHAUL

God's Lake

2024 / 2025



2025 / 2026



Manto Sipi

2024 / 2025

*Planning Phase*

2025 / 2026



# 2025 IMPACT: DIVERSION & BACKHAUL



## 2025/2026 Highlights

- **236 Bales** of Cardboard
  - **1,000+** Tires
  - **105 Units** White Goods (Scrap)
  - **11 Drums** Used Oil & Fluids
  - **10 Pallets** Lead-Acid Batteries
- \*METRICS MATTER!**

The logo for Dillon Consulting, featuring a stylized white graphic of a curved line above two parallel diagonal lines.

**DILLON**  
CONSULTING

**THANK YOU**  
Questions?