



Catapult Environmental Inc.

WE HAVE BUILT IT – WILL THEY COME?:

A new comprehensive commercial composting option for Manitoba opens, but universal adoption of organics diversion and circularity remain elusive

Alex Singbeil – Catapult Environmental – June 13, 2025 – Session 4B

Our Facilities



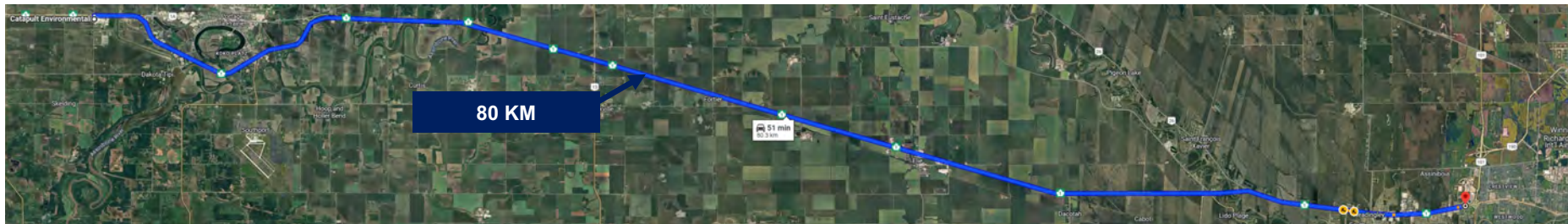
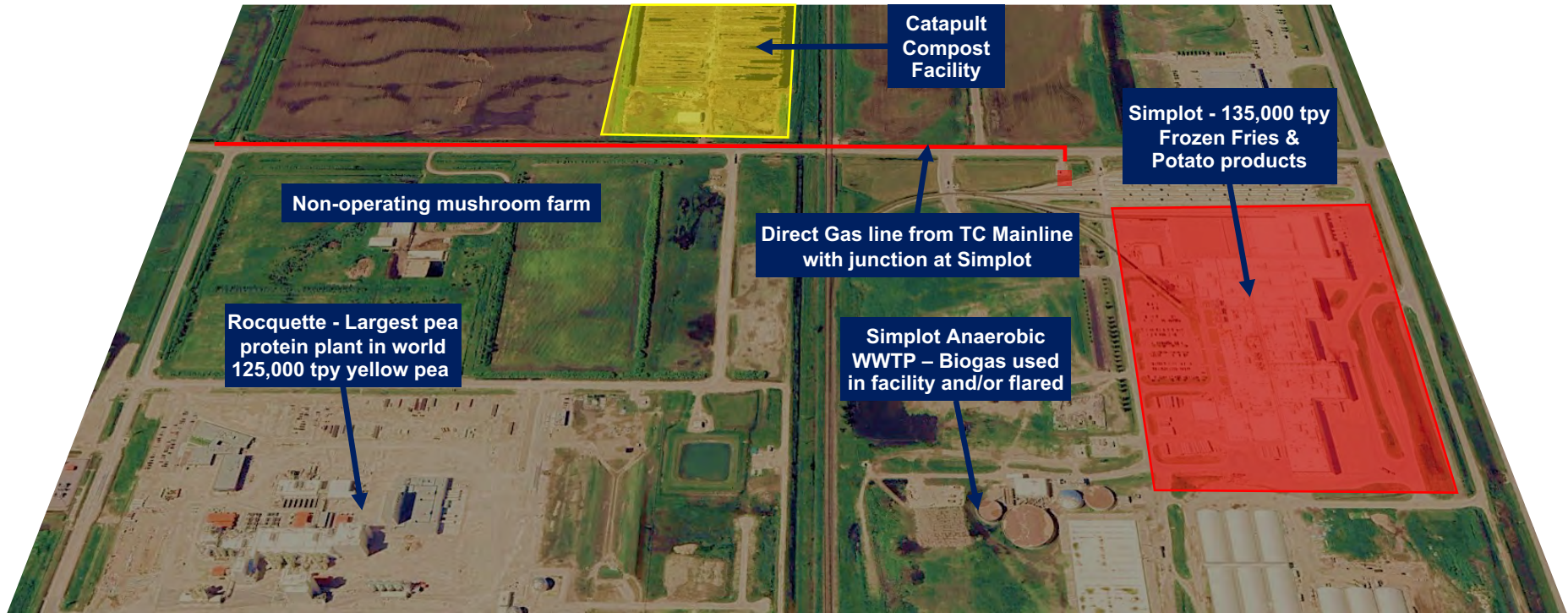
Aldersyde, AB

Portage la Prairie, MB





Manitoba Location





2025 – New Capabilities

Clause 49

The licensee shall only accept and use the following wastes as compost feedstock for the development: green waste, potato waste, feed mill waste, wood waste, straw, livestock manure and bedding, household kitchen wastes (e.g., fruits, vegetables, dairy products, table scraps, bread, rice, pasta, coffee grounds, filters, tea bags, eggshells, paper products, fast food drink trays, soiled paper towels, tissues, serviettes and other biodegradable materials), onion or other vegetable and plant wastes, meat packaging facility trim, scraps and wrap cut offs, undigested food from animal intestines, spoiled, extracted, flushed or floor sweepings from animal feed or seed plants, pre- or post-consumer organic wastes from Industrial, Commercial or Institutional sources, free from contaminants that would affect or degrade the commercial composting process or compost. The licensee must obtain written approval from an environment officer prior to the acceptance, use or collection of any other feedstock materials.

What We Have Built (so far)

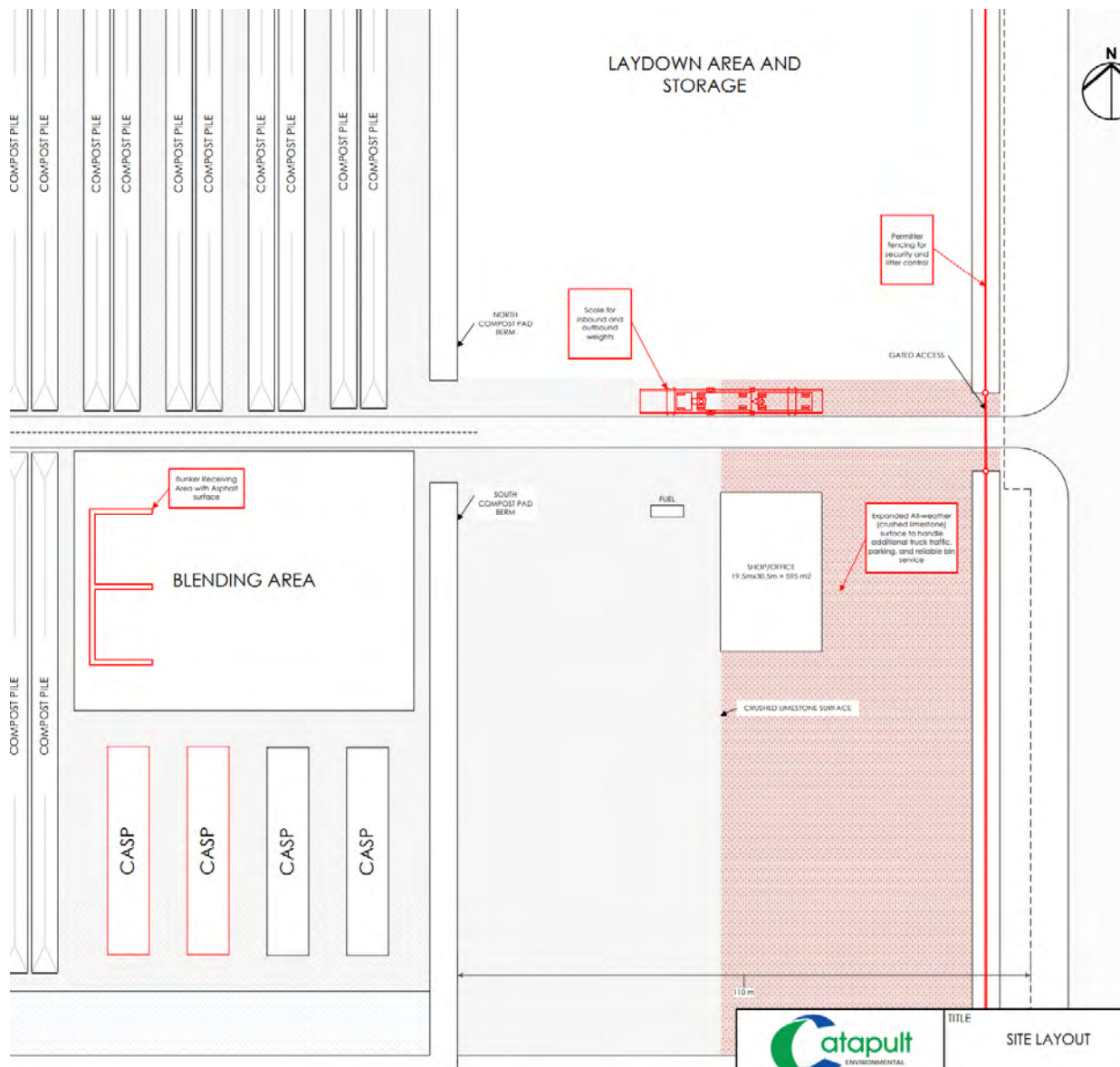


Over \$1 million in invested in 2024, and over \$2 Million allocated in 2025

2024 Investments



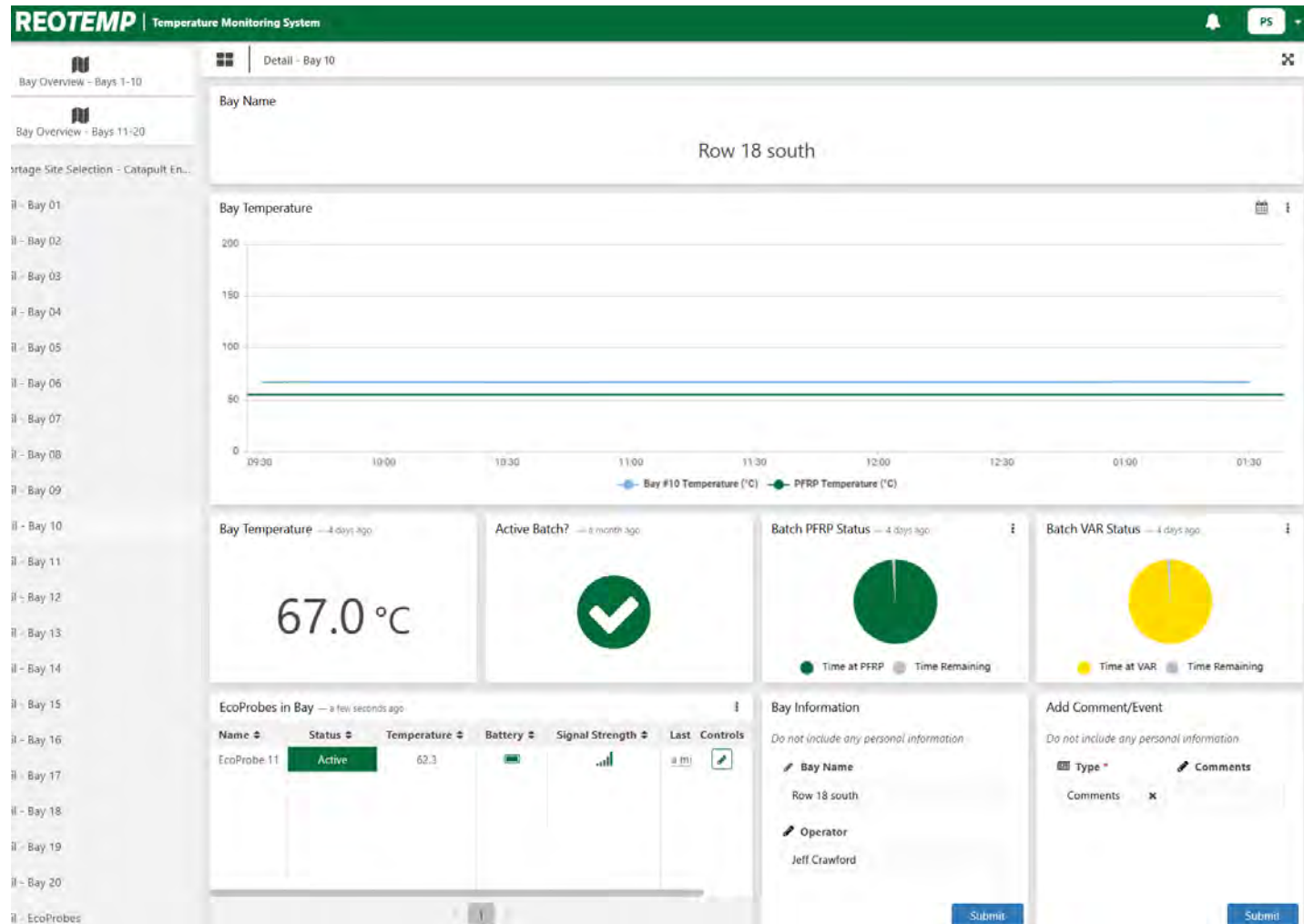
Site Improvements



2025 Investments

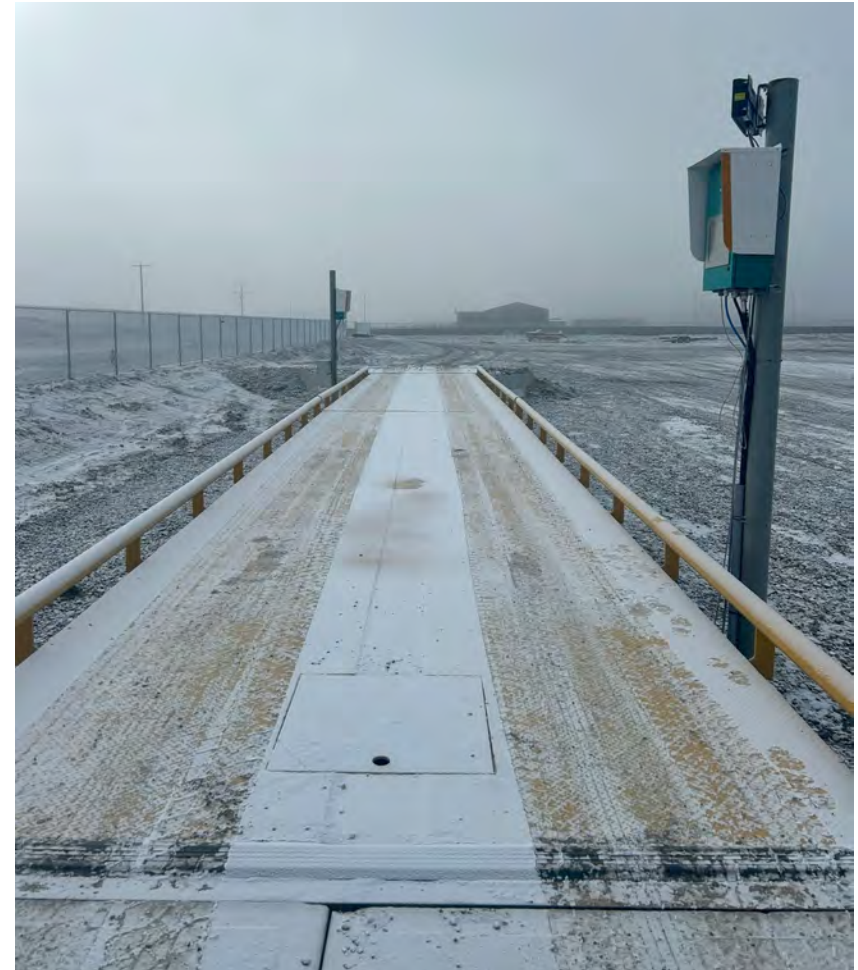
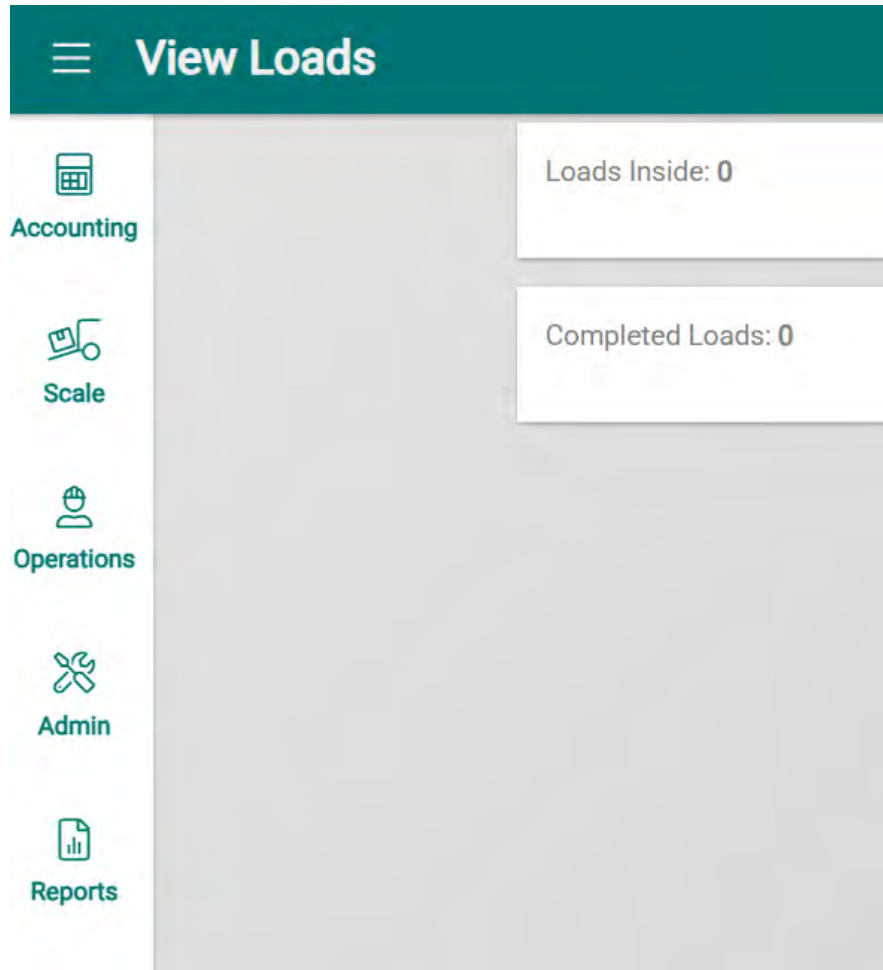


REOTEMP System





Strong Data and Scale

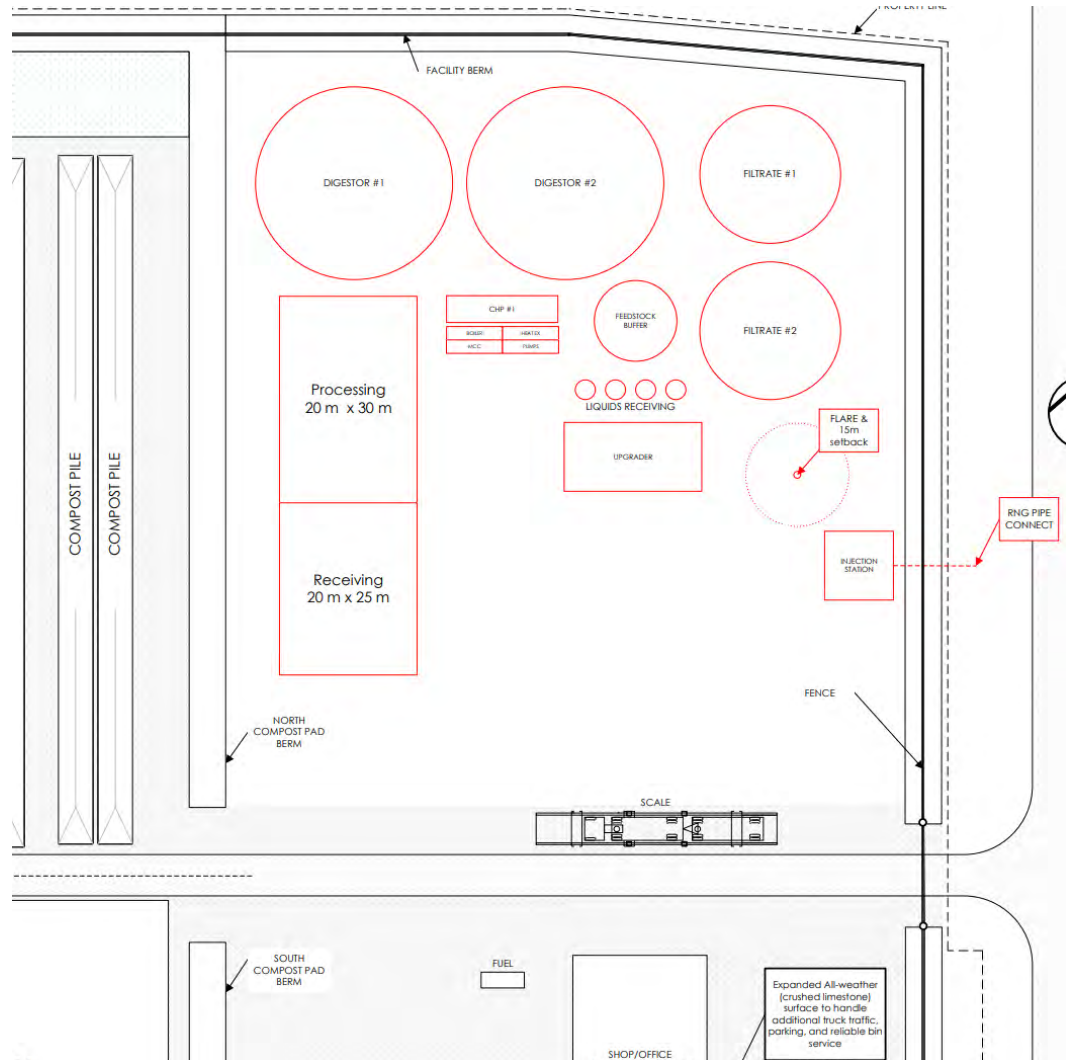




Where This Is Headed

AD and RNG production integrated with compost

Targeting 2026, planning and permit applications are in progress





We Have Built It - Will They Come?...Yes...

Founding

JR Simplot

Assiniboia Downs

Roquette

Transition

HyLife

Assiniboine Park
Conservancy

MWM/Southport

McCain

Gay Lee Foods

2025 and beyond

HyLife

Roquette

Alliance Tree Care

City of Portage

Freshwater Fish

First I of IC&I - Industrial





...But Also... No.

Where's the C&I – Commercial and Institutional?
There remain barriers. Collection is limited.

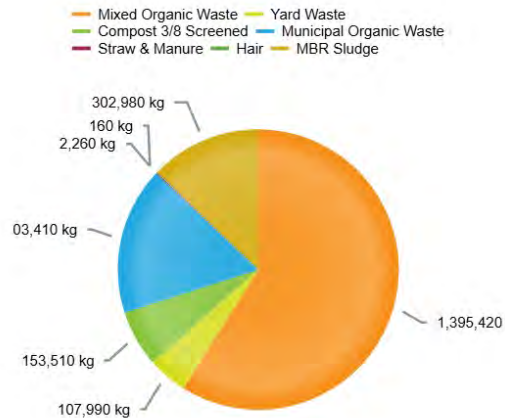
Still no firm plans for Green cart in PLP and City of
Winnipeg is in process that won't go live until 2029/'30

Different City - Policy - Waste Streams



Select a site:

Aldersyde



Meanwhile in Portage

- Collection challenges,
- Low local tipping fees in Portage,
- Lack of familiarity because no green cart programs in either city.

We Can Build More.

Transfer station? – It's in our plan but...

The “Kevin Costner” approach can only take us so far - Likely policy is required – civic or provincial



Thanks – and any questions?

