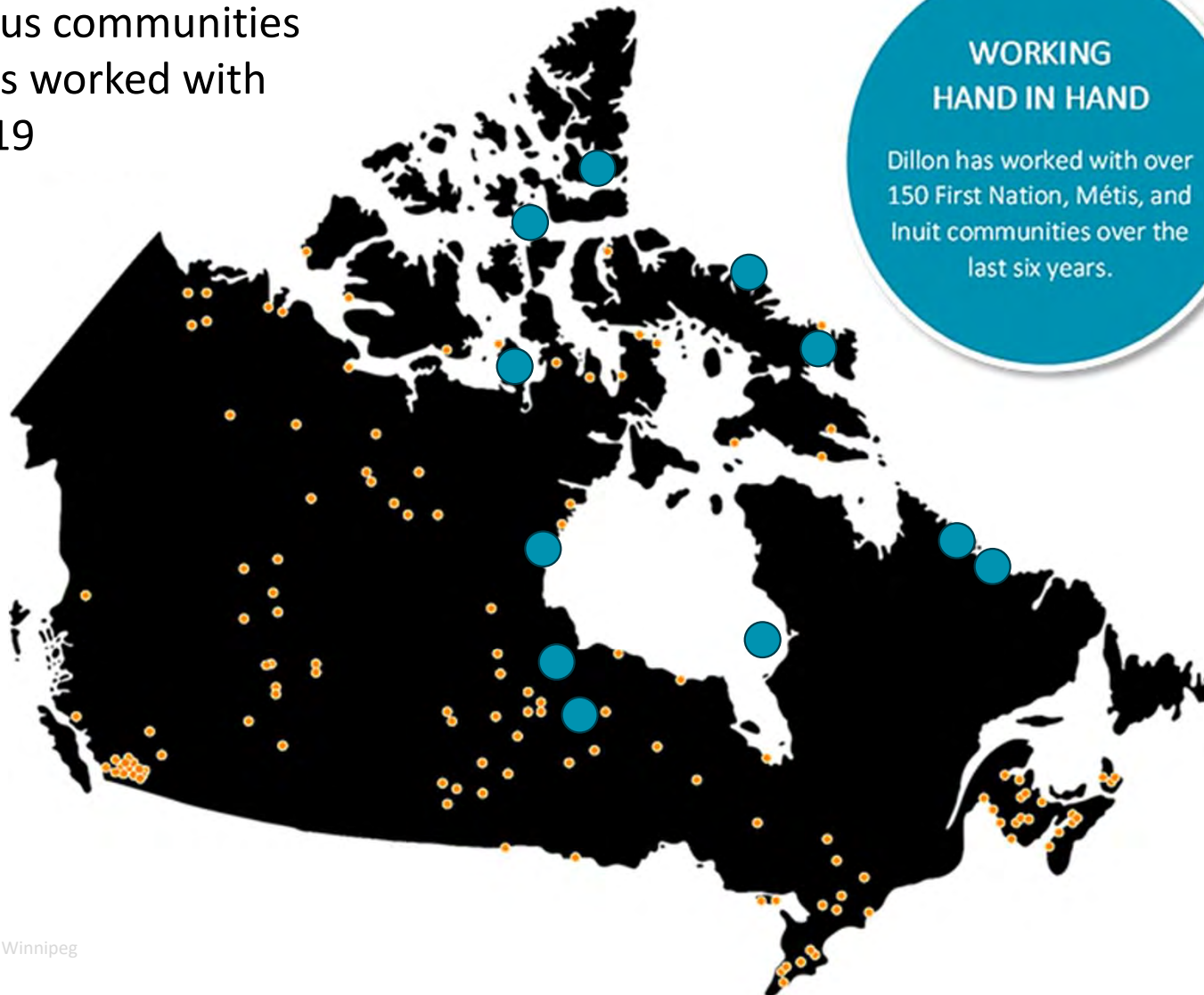


# Lessons from Remote Waste Management in Canada

Insights from Nunavut, Nunatsiavut, and Northern Manitoba

**DILLON**  
CONSULTING

Indigenous communities  
Dillon has worked with  
since 2019

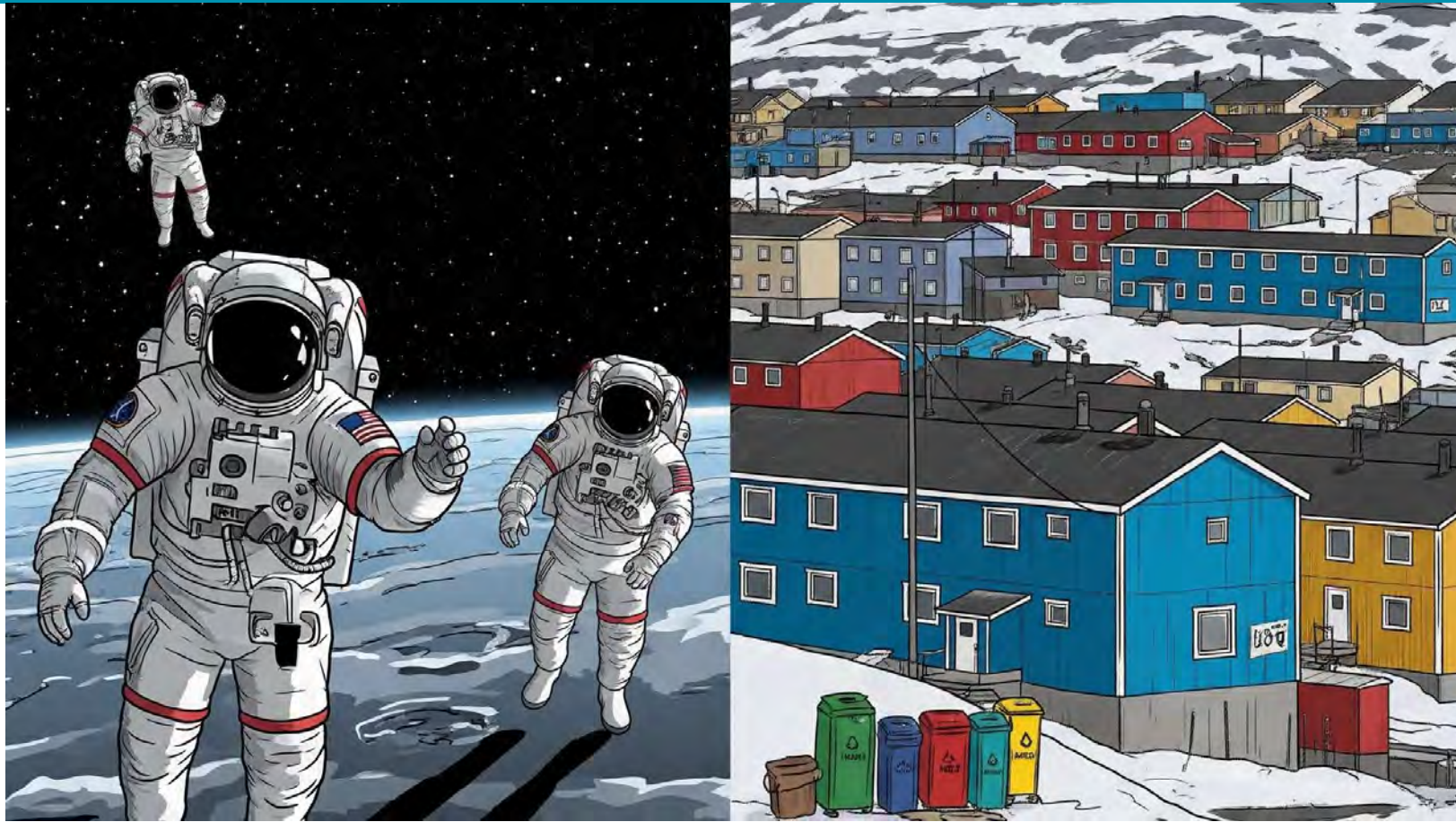


**WORKING  
HAND IN HAND**

Dillon has worked with over  
150 First Nation, Métis, and  
Inuit communities over the  
last six years.



# Unexpected Connections



# The Unique Landscape of Remote Waste Management

- Vast distances and dispersed communities.
- Extreme climate conditions and their impact on operations.
- Strong cultural connections to the land.





# The Unique Landscape of Remote Waste Management

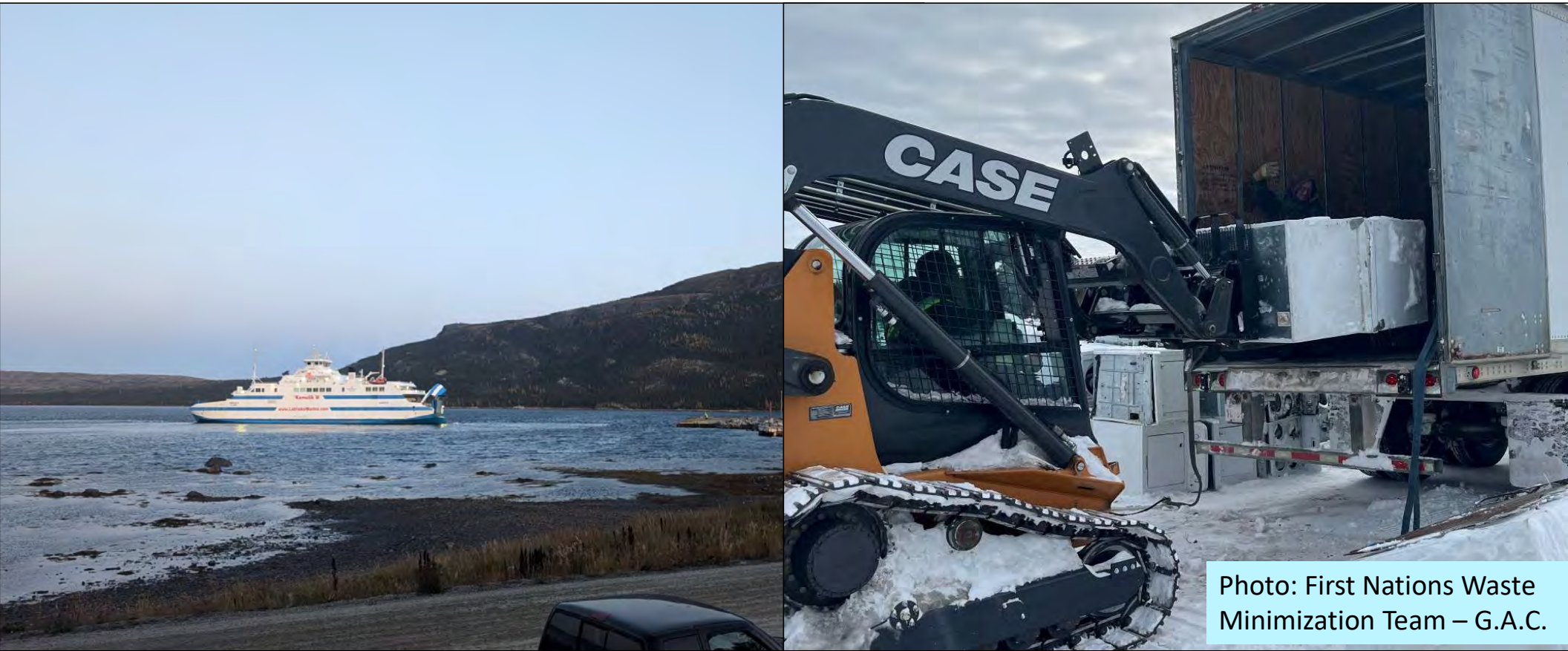


Photo: First Nations Waste Minimization Team – G.A.C.



## Shared Realities

- Historical underfunding and limited investment in infrastructure.
- Challenges in attracting and retaining trained personnel.
- The long shadow of legacy waste sites.





# More Than Just Trash: Protecting Land, Health, and Culture





# Resourcefulness in Remote Settings: Homegrown Solutions

- Examples of locally adapted technologies or practices.
- Community-led initiatives and the power of local knowledge.
- Creative approaches to waste reduction and diversion.





## Connecting Communities: Strength in Shared Experiences

- The value of peer-to-peer exchange between remote communities.
- Building a network of support and shared expertise.





# Tangible Improvements: Sharing What Works

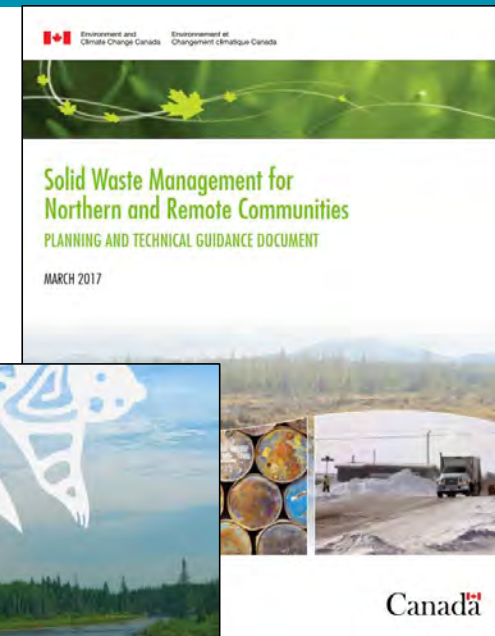
## Communication with External Services:

- Establishing clear and consistent communication protocols.
- Building strong, long-term relationships with haulers and contractors.

## Staff Retention:

- Recognizing the essential role of waste management workers.
- Creating supportive and safe working environments.

SWANA NLC Conference 2025 - Winnipeg





## The Future is Collaborative: Building Capacity Together

- The ongoing need for sustained investment and support.
- Allocate time to visit and spend time in the communities.
- Be mindful of Engagement fatigue!





# Moving Forward Together: Towards Cleaner and Healthier Northern Communities







Thank you!

Mario Poveda, M.Sc., P.Eng., PMP  
Dillon Consulting Limited  
[mpoveda@dillon.ca](mailto:mpoveda@dillon.ca)



**DILLON**  
CONSULTING