

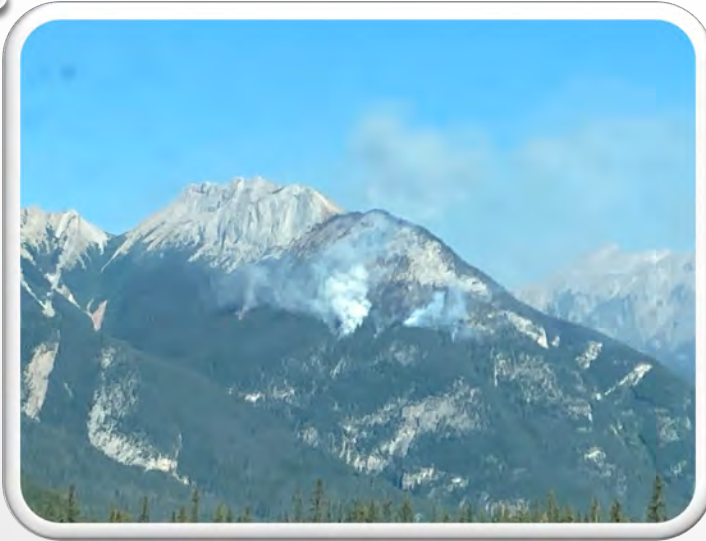
The background of the slide is a light gray gradient with several realistic water droplets of various sizes scattered across it. The droplets have highlights and shadows, giving them a three-dimensional appearance. The main title is centered in the upper half of the slide.

# **JASPER-CHETAMON WILDFIRE**

## **AUG 31 - SEPT 13, 2022**

MUNICIPAL RESPONSE  
AN OPERATORS DISCUSSION

- Jasper was without reliable power for 5 ½ days
- Evacuation decision point was if we could not operate the WWTP. “We are in an emergency situation. We cannot have an environmental emergency too.”
- Jasper’s typical demand is 7.5 MW. Generators being brought in were 1.8 MW per unit.
- WWTP Class IV BNR Plant. ~4500 M3 day. Backup Power generator is 200 KVA, line power is 400 KVA.
- Typical tourist traffic ~27,000 per day
- Parks Canada Disaster Team ~ 400 staff, temp kitchen, 4” water line from hydrant, 6” line in sewer manhole.
- 13 helicopters active for bucketing operations including a command and control helicopter



**SEPT 02 10:47AM**

LIGHTNING STRIKE AT THE TOP OF  
CHETAMON MOUNTAIN EVENING AUG 31

FIRE 1000M FROM POWER LINES



**SEPT 02 3:13PM**

WIND PICKED UP AROUND NOON



**SEPT 02 7:43PM**

FIRE BURNT TO THE VALLEY FLOOR

500M FROM POWER LINES

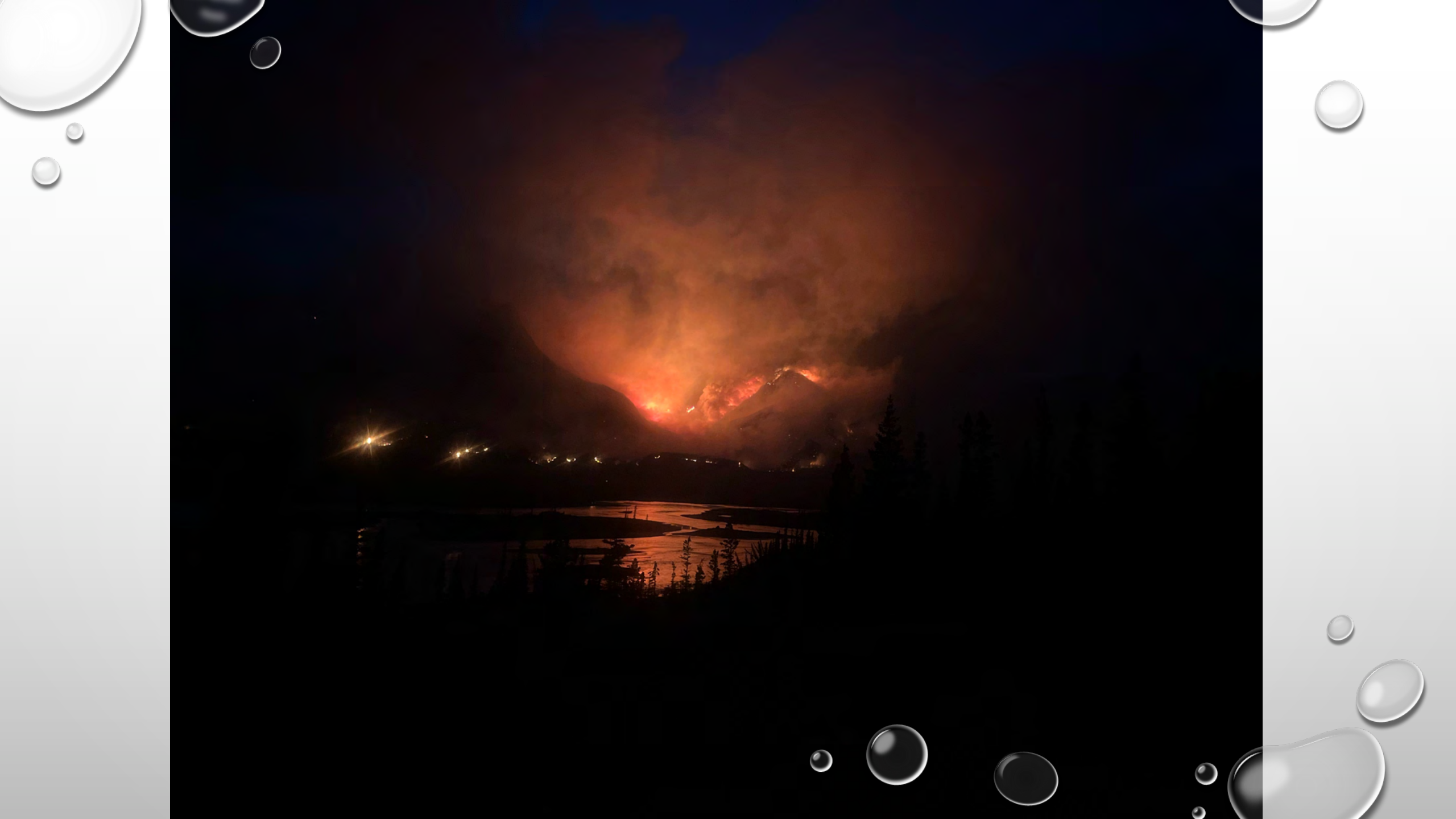


SEPT 03

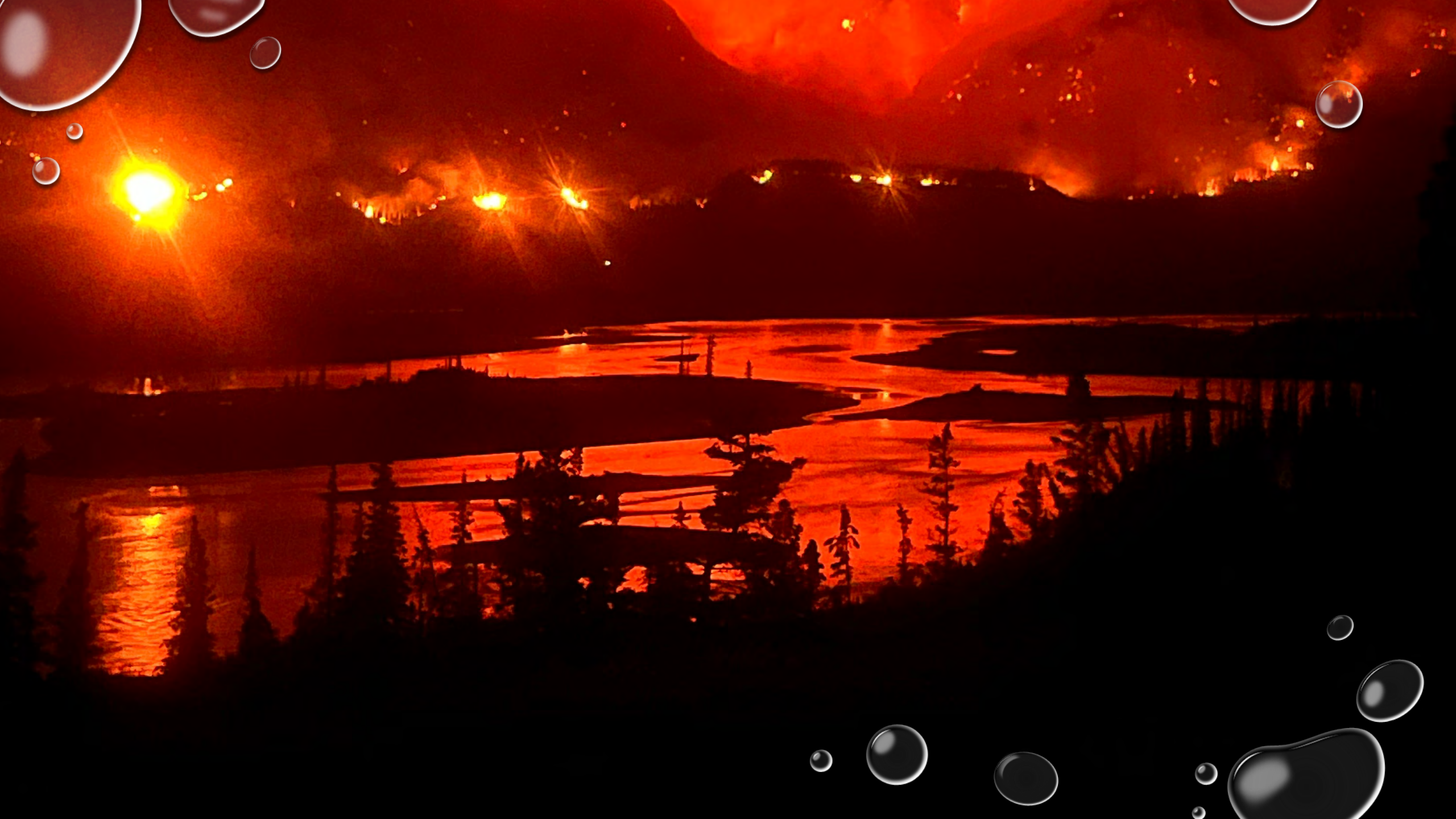
FIRE NOW 300M FROM POWER LINES

ECC DECIDING VARIOUS CONCERNS  
INCLUDING EVACUATION OF THE TOWN





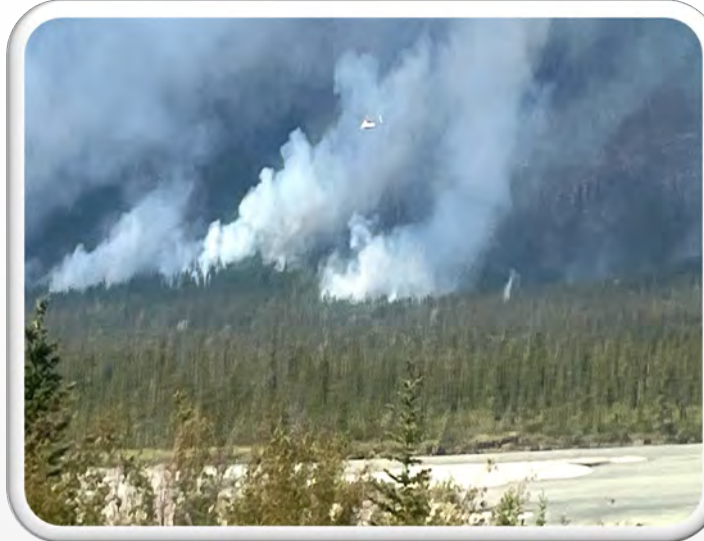












## SEPT 04

FIRE HITS THE GAS AND POWER LINE R.O.W. AT 12:37 PM

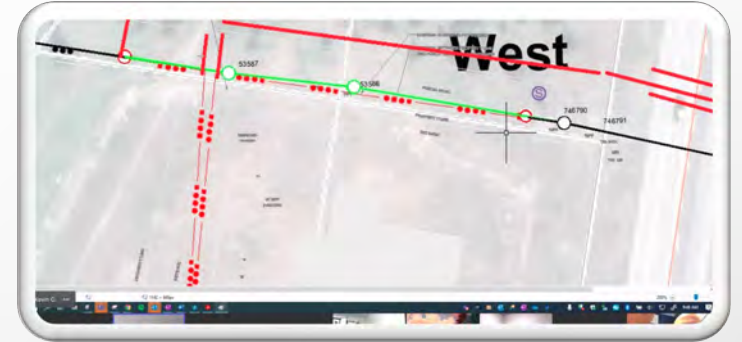
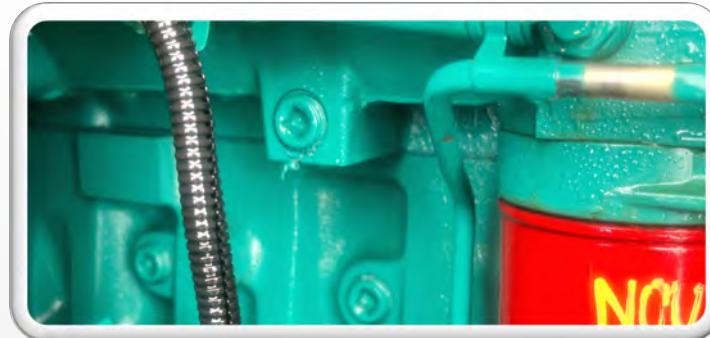
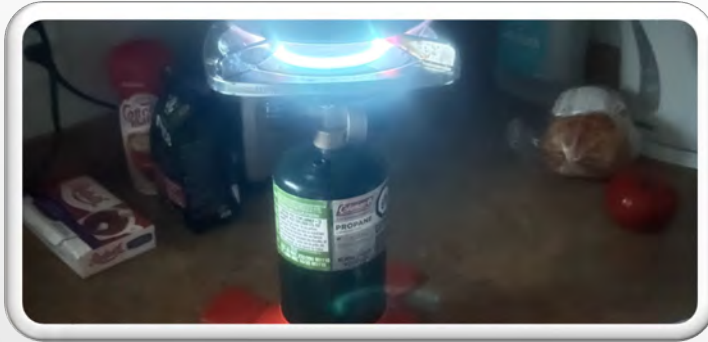
FIRST POWER OUTAGE OCCURS ABOUT 6:00 PM. ~90 MINUTES

TEMPORARY GENERATORS ARRIVED AND BEING HOOKED UP

FIRE HAS GROWN TO 1500+ HECTARES



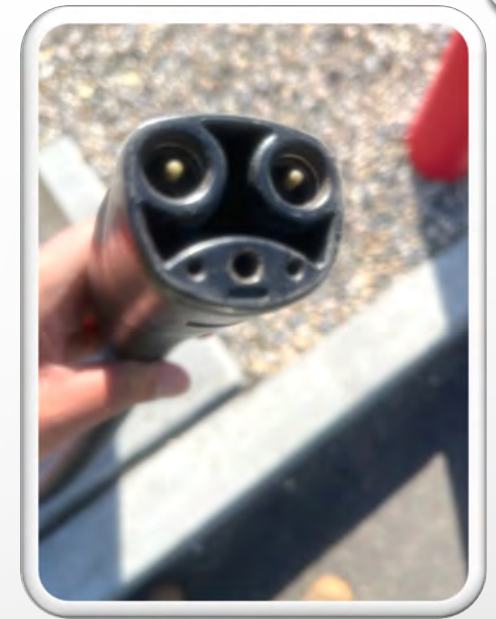
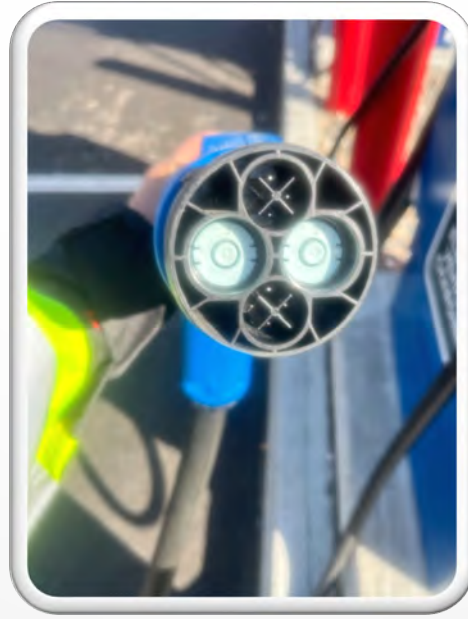
SEPT 05  
POWER LINES FAILED AROUND 1:05 AM  
PLANNING FOR A LONG TERM MULTI-DAY EVENT



FIRE ESTIMATED TO BE  
8500 HECTARES

1<sup>ST</sup> GENERATOR FAILURE AT WWTP

ECC FULLY ACTIVATED;  
COMMUNICATIONS TO COMMUNITY;  
FUEL SCHEDULE ESTABLISHED; GENERATOR  
CHECKS ONGOING; ESS ACTIVATED WITH  
ACTIVITY CENTRE BECOMING  
CHARGING/INFO CENTRE



## ELECTRIC VEHICLES

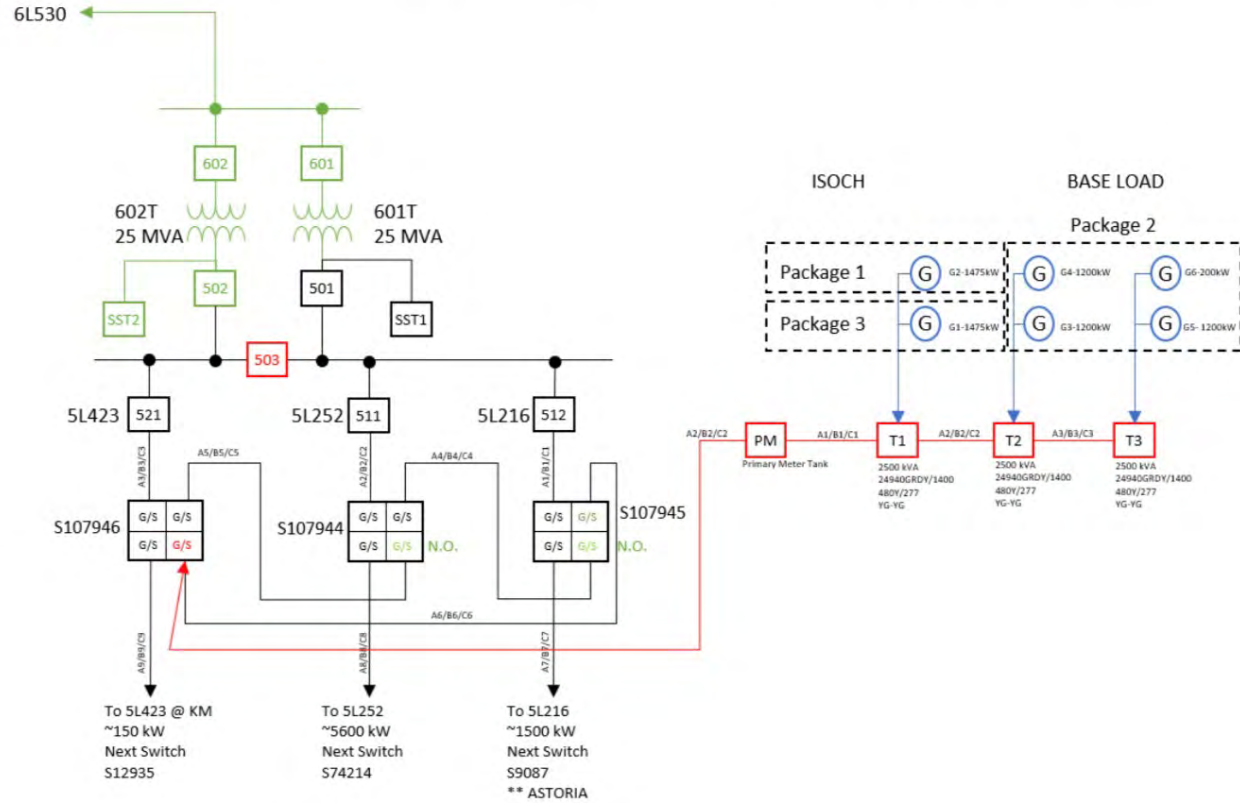
UNABLE TO SOURCE A BACKUP  
GENERATOR FOR HIGH SPEED CHARGERS

EVACUATION CONCERNS AS WE MAY  
HAVE HAD UP TO 40 EV'S IN JASPER

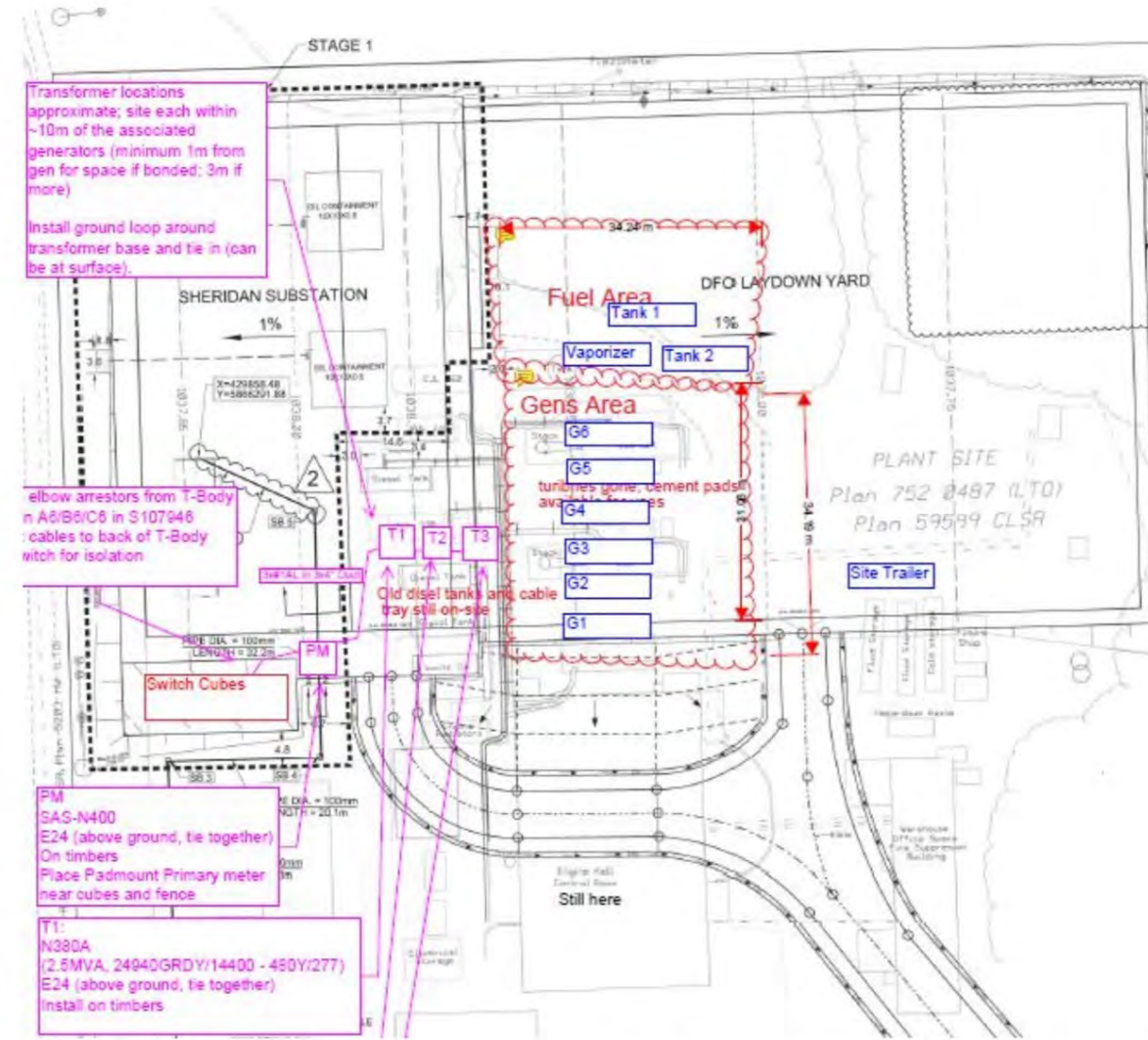


# TEMPORARY GENERATION PLANT

# TEMPORARY GENERATION PLANT



Schematic of generation connection to Sheridan substation



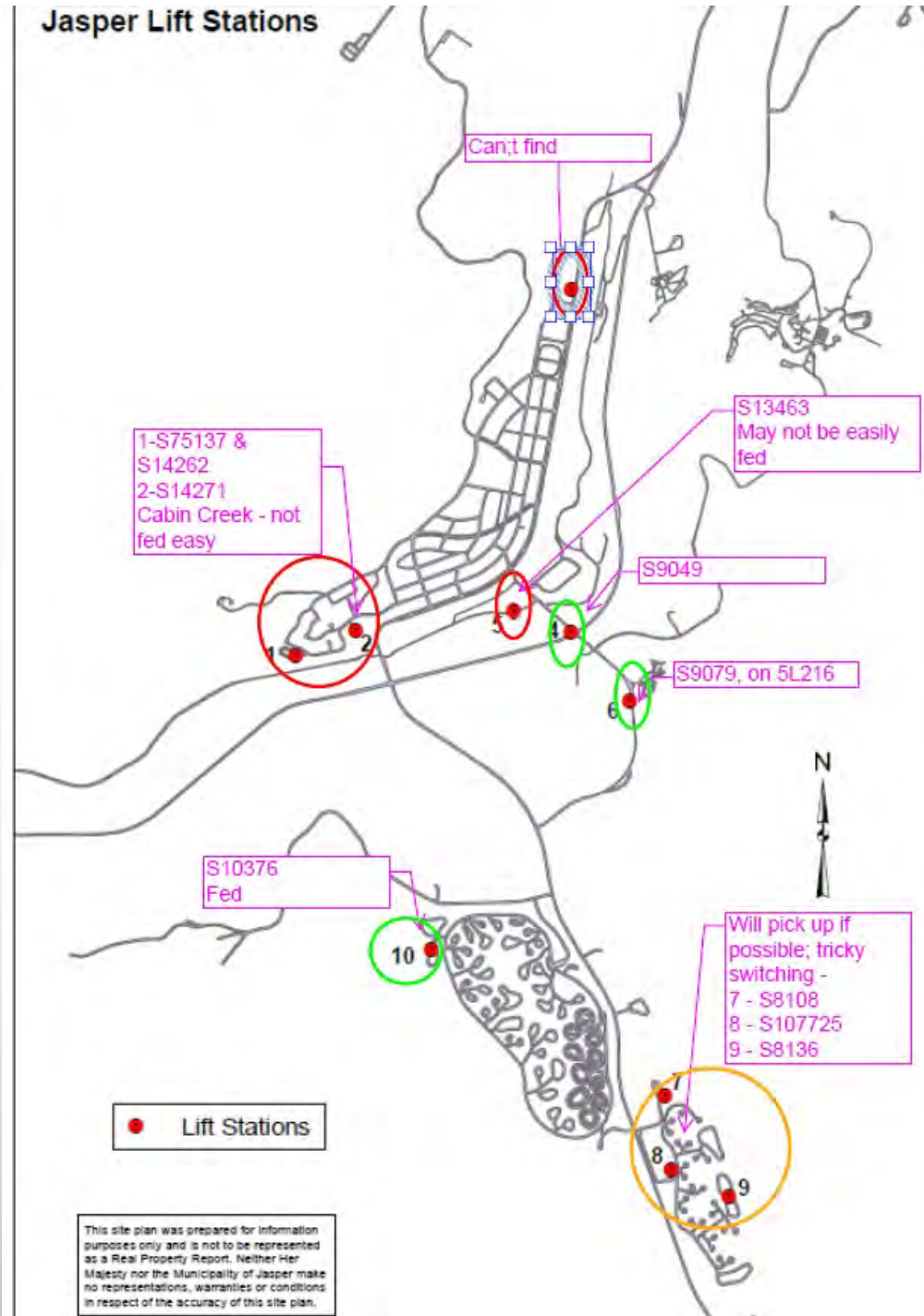
Site layout of equipment

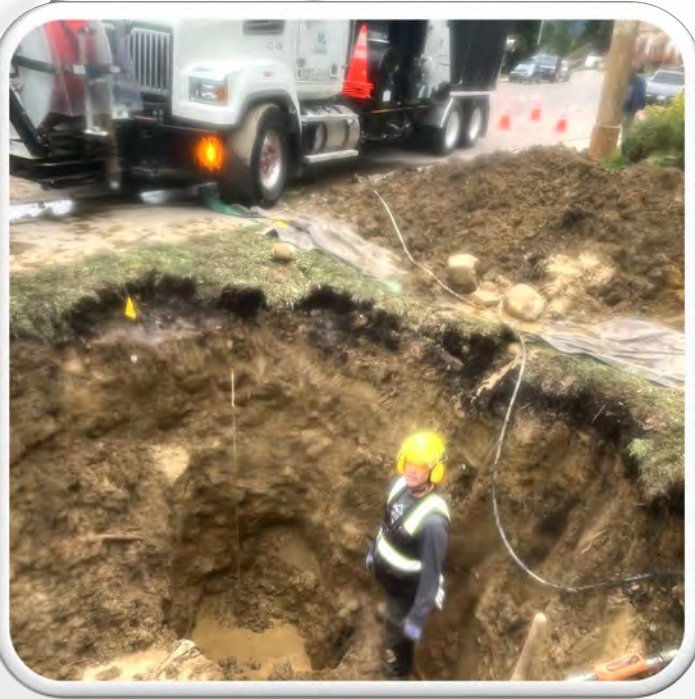




# LIQUIFIED NATURAL GAS

# Jasper Lift Stations





## SEPT 6 BUSINESS AS USUAL AT OPERATIONS

UTILITIES STAFF CONTINUED PLANNED MAINTENANCE WORK WHILE DEALING WITH SERVICING MULTIPLE GENERATORS.

WWTP GENERATOR FAILED TWICE ONCE WITH A COOLANT LEAK THEN WATER PUMP.

# FIRE PROTECTION LINES

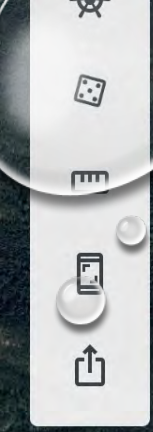


## HIGH VOLUME SPRINKLER SYSTEMS DEPLOYED

FIRE PROTECTION LINES DEPLOYED TO PROTECT THE WTP, TOWN AND THE TRANS-MOUNTAIN INFRASTRUCTURE

CAPABLE OF DELIVERING 100MM PER HOUR COVERING 150 M RADIUS.





Tourism Jasper

Henry House

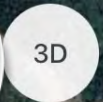
Jasper

Jasper National Park

Athabasca River

Athabasca River

Athabasca River



WWTP GENERATOR  
**GENERATOR ISSUES**  
LOW PRESSURE FUEL RETURN LINE CRACKED.

COOLANT LEAK

WATER PUMP

LAB HAD MINIMAL POWER

RENTAL UNIT 400 KVA

HOMEOWNERS AND BUSINESSES HAD DANGEROUS CONNECTIONS

FLEET STANDARDIZATION; HITCH SIZING; CONNECTIONS







# UNIFIED COMMAND



## MUNICIPALITY OF JASPER

COMMUNICATION WITH THE COMMUNITY  
ENSURE UTILITIES REMAINED FUNCTIONAL  
LOSS OF WWTP WOULD INITIATE EVACUATION



## PARKS CANADA

FIRE FIGHTING INCLUDING BACK BURNS  
HELICOPTER OPERATIONS  
WORK WITH ALBERTA WILDFIRE FOR BOMBER SUPPORT



## ATCO ELECTRIC

PROVIDE TEMPORARY GENERATION  
LINE REPAIRS

# MANAGING THE EMERGENCY

Organizational strength, all 3 agencies trained to appropriate Incident Command System (ICS), with many trained in specific roles: ie Logistics, Operations, Planning.

## Communications

ESS set up Community Charging and Info Centre. Ice was available for food preservation. Included everything from facebook updates to Mayor on National News.

## Regulatory Compliance

Aquatera and Municipality had a meeting with AEP and Environment Canada to advise them we were in emergency situation. Minor releases had happened.

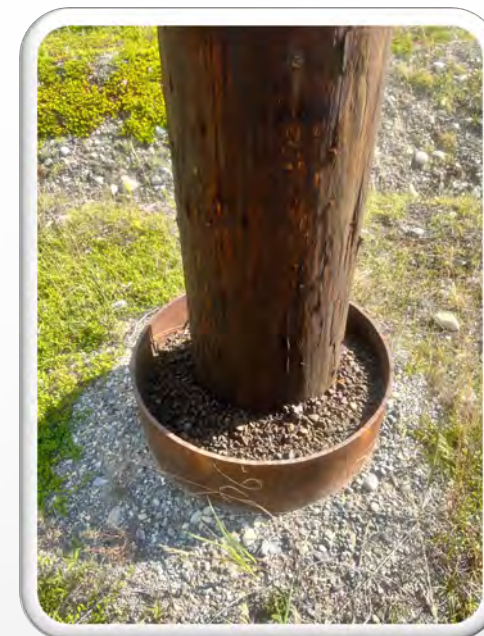
Staff rotations established.

Calls for generator service from other agencies including AHS.

Critical that staff are fully informed about the event.

Area Closure  
Fermeture de zone





## TYPICAL POWER POLE

POLES SURROUNDED BY 10MM STEEL BARRELS, FILLED WITH TREATED GRAVEL.

POLES ARE TREATED WITH CREOSOTE

LINES ARE INSULATED



# POWER LINE REPAIR













LES INSTALLATIONS SUR CET HELICOPTERE CONTIENNENT LES LIMITATIONS D'UTILISATION  
DE CE GYROVIVRE LES AUTRES LIMITATIONS D'UTILISATION  
DE CE GYROVIVRE SONT CONTENUES DANS LE MANUEL  
DE NAVIGABILITE' DU MANUEL D'ENTRETIEN DU GYROVIVRE DOIT ETRE RESPECTE.  
THIS HELICOPTER CONTAINS OPERATING LIMITATIONS WHICH MUST BE  
RESPECTED. ANY OTHER OPERATING LIMITATIONS WHICH MUST BE  
RESPECTED ARE CONTAINED IN THE ROTORCRAFT FLIGHT MANUAL.  
THE MAINTENANCE MANUAL MUST BE COMPLIED WITH.

LES INSTALLATIONS SUR CET HELICOPTERE CONTIENNENT LES LIMITATIONS D'UTILISATION  
DE CE GYROVIVRE LES AUTRES LIMITATIONS D'UTILISATION  
DE CE GYROVIVRE SONT CONTENUES DANS LE MANUEL  
DE NAVIGABILITE' DU MANUEL D'ENTRETIEN DU GYROVIVRE DOIT ETRE RESPECTE.  
THIS HELICOPTER CONTAINS OPERATING LIMITATIONS WHICH MUST BE  
RESPECTED. ANY OTHER OPERATING LIMITATIONS WHICH MUST BE  
RESPECTED ARE CONTAINED IN THE ROTORCRAFT FLIGHT MANUAL.  
THE MAINTENANCE MANUAL MUST BE COMPLIED WITH.






# THINGS THAT WENT WELL

- HAD A LARGE CONTINGENT OF STAFF TRAINED TO ICS 300
- ESS FULLY ESTABLISHED – FOOD DROP OFF – CHARGING STATION/INFO CENTRE
- COMMUNICATIONS – CONSISTENT MESSAGING BY ALL 3 PARTIES (MUNI, ATCO, PC)
- COMMUNITY
- PLANS ESTABLISHED EARLY FOR CLEANUP AFTER EVENT – SOLID WASTE PICKUP– MUNICIPAL BUSINESS CONTINUITY – PROBLEMS NOTED WORKED INTO THE NEXT BUDGET
- PAST TABLE-TOP EXERCISES PAID OFF – MOST IN THE ECC KNEW /WORKED WITH EACH OTHER



# THINGS THAT DIDN'T GO SO WELL...

- L.N.G. FUEL SUPPLY IS NOT CONSISTENT
  - LONG LEAD TIME TO SOURCE 7.5 MW GENERATION
  - LOSS OF FOOD
  - BUSINESS CONTINUITY
- 

**Questions???**

