



# Presentation Outline

- Why Do We Compost?
- Organics Program History
- Current Programs
- Organics Life Cycle
- Challenges
- Moving Forward
- Questions

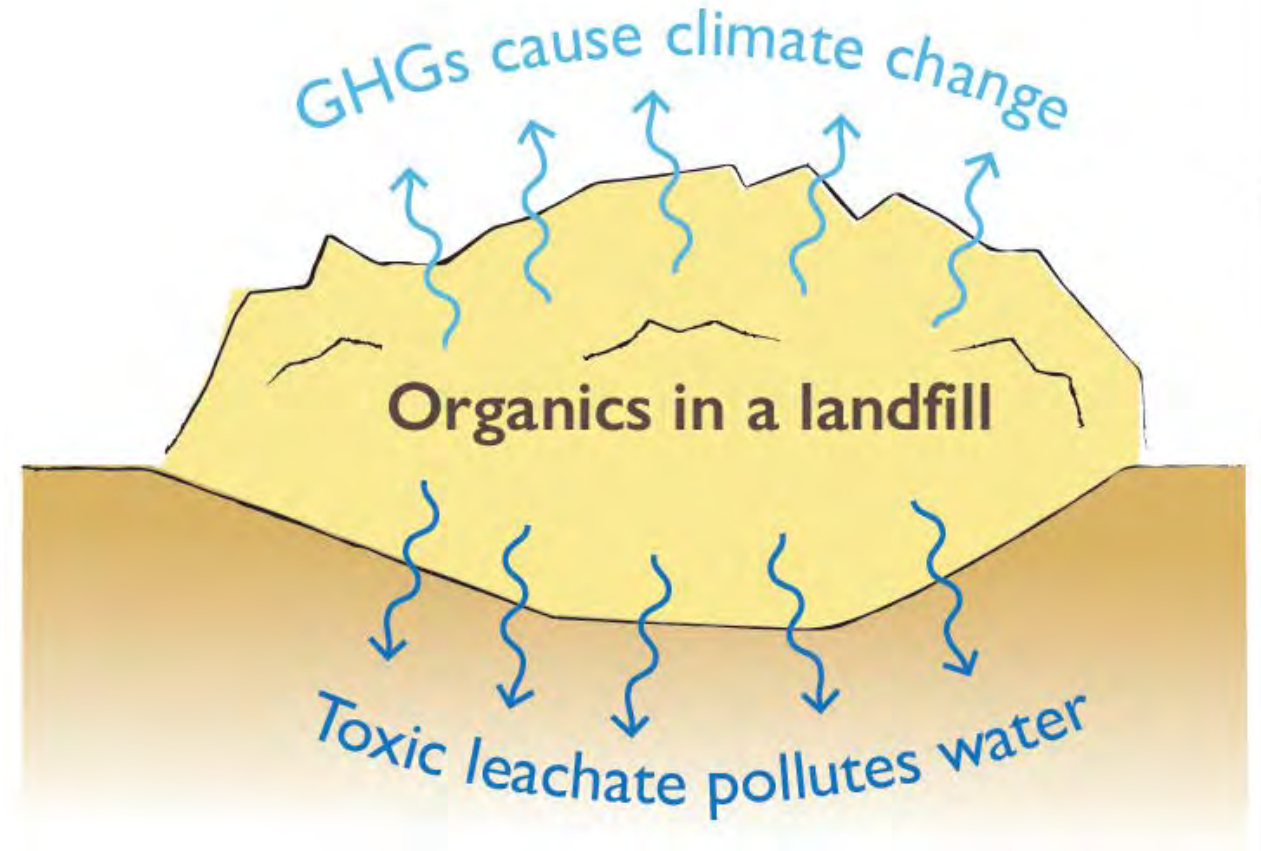
Grow a greener  
**tomorrow.**



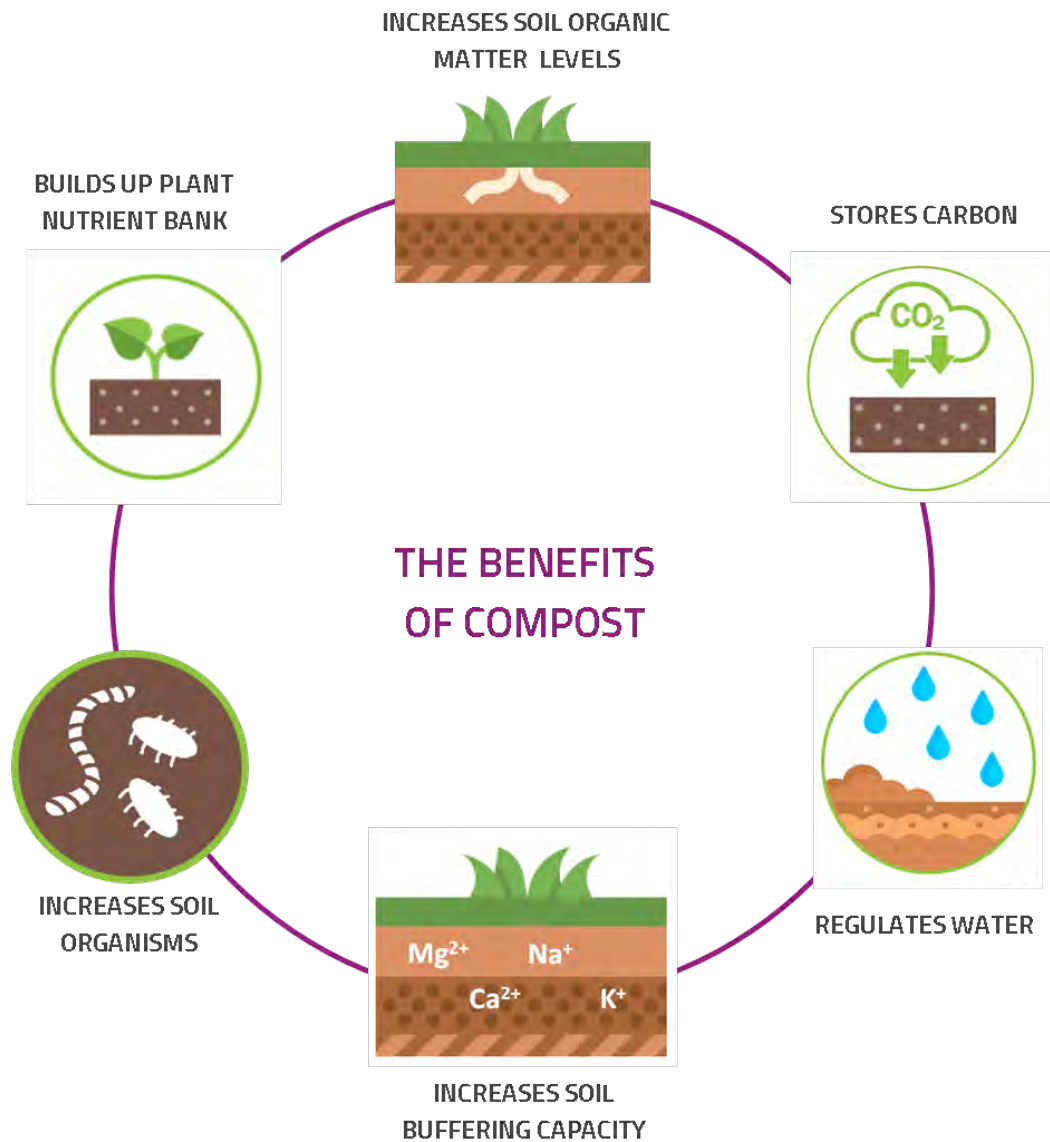
THE WILDERNESS CITY  
[www.whitehorse.ca](http://www.whitehorse.ca)

# Why Divert Organics?

- In a landfill, organics break down without oxygen and release methane
- These legacy GHG emissions are produced over many years
- Contributes to leachate which can make it into groundwater



# The Value of Compost



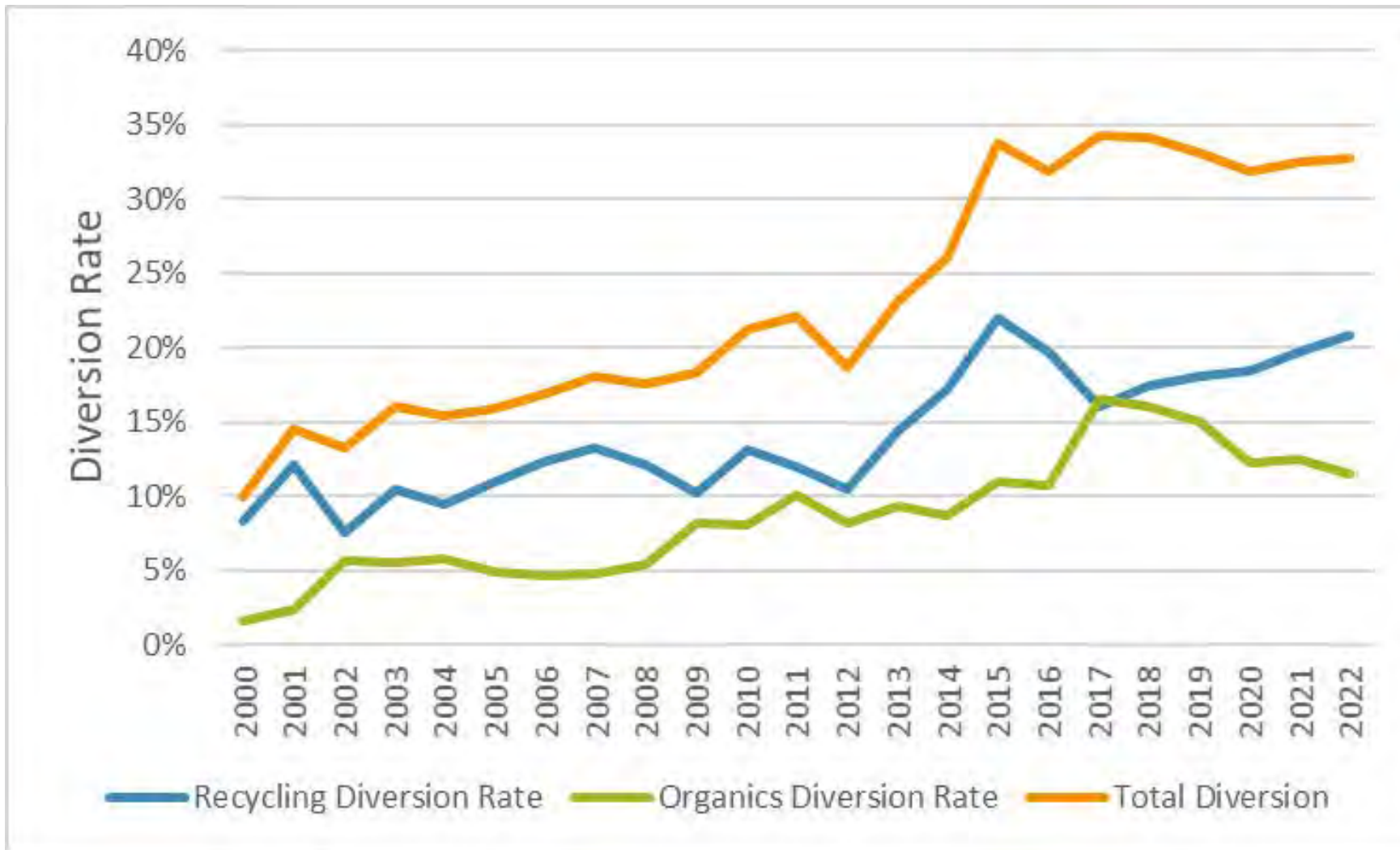
- Filters pollutants
- Retains water in soil
- Increases soil fertility and structure
- Promotes plant growth
- Sequesters carbon
- Turns waste into a **local** product which showcases the Circular Economy

# Background: Timeline of Organics Program

- 1998: Pilot compost project
- 2005: Program expanded
- 2008: City wide program adopted
- 2016: Organic Materials Review Institute recognition
- 2019: Commercial organics program started
- 2020: Facility upgrades



# Diversion Data



# Residential Program

Biweekly collections from approximately 8400 homes.

- Multi-family homes of 4 or less units
- Single homes



# Commercial Program

Weekly collections from:

- Multi-family homes of 5 or more units
- Food service businesses
- Option for carts or large volume bins for bigger producers

Program collects from ~340 businesses and multi-units.







# Organics Life Cycle

Grow a greener  
**tomorrow.**

THE WILDERNESS CITY  
[www.whitehorse.ca](http://www.whitehorse.ca)

# Organics Life Cycle



**WHAT GOES WHERE? ORGANICS SORTING GUIDE**

Whitehorse

**These items belong in your green cart or green bin:**

- All food waste and food scraps
- Yard waste, grass clippings, leaves, cut plants, twigs, sawdust, wood shavings
- Food-soiled paper – coffee filters, napkins, tea bags, brown paper, paper towel, tissue
- Shells, bones, and meat
- Compostable dishware & bags

**NO PLASTIC**

**Did you know...**  
When organic material decomposes in our landfill, it produces methane, a greenhouse gas that's 25 times more damaging than carbon dioxide.

**Organic separation is the answer!**  
Use your Green Cart every day to capture all your food, yard and garden waste. We'll take it and make compost: a rich garden booster.

**Heart your Green Cart**

**OBPI**  
Is it compostable? Look for the logo! It's on the packaging or product itself. These logos guarantee the item is compostable.

Get the dirt on organic separation.  
**Grow a greener tomorrow.**

organics@whitehorse.ca  
whitehorse.ca/organics

# Organics Life Cycle



# Organics Life Cycle





# Organics Life Cycle



# Organics Life Cycle





# Organics Life Cycle



Grow a greener  
**tomorrow.**

# Challenges: Contamination

- Contamination of feedstock
- Illegal dumping
- Enforcement for repeat offenders
- Requirement to have adequate spacing for collection





# Other Challenges

- Cart damage due to freezing of materials
- Participation rates could be improved
- Road access for collection vehicles in winter
- Rapid development overlooks waste requirements



# Moving Forward

- Continue to expand collection program into commercial sector and multi-family residences
- Education & enforcement to reduce contamination and increase participation
- Facility and equipment upgrades to increase production ability





# Questions?

Grow a greener  
**tomorrow.**



Heart your  
**Green Cart**  
ORGANICS SEPARATION

