

SWANA Canada Symposium 2022

Landfill & Landfill Gas Safety: Prevalent Hazards, Unique Solutions

Suzanne Sturgeon & Scott Lambert
SCS Engineers



SCS FIELD SERVICES

Building a Safety Culture

- Situational Awareness
- Plan & Prepare
- Stop Work Authority



Recognizable Hazards

- Heavy Equipment
- Confined Spaces
- Construction Activities
- Power Tools



Heavy Equipment

- Competent Person
- Operations
- Working Around Equipment



Heavy Equipment

- Slope Stability



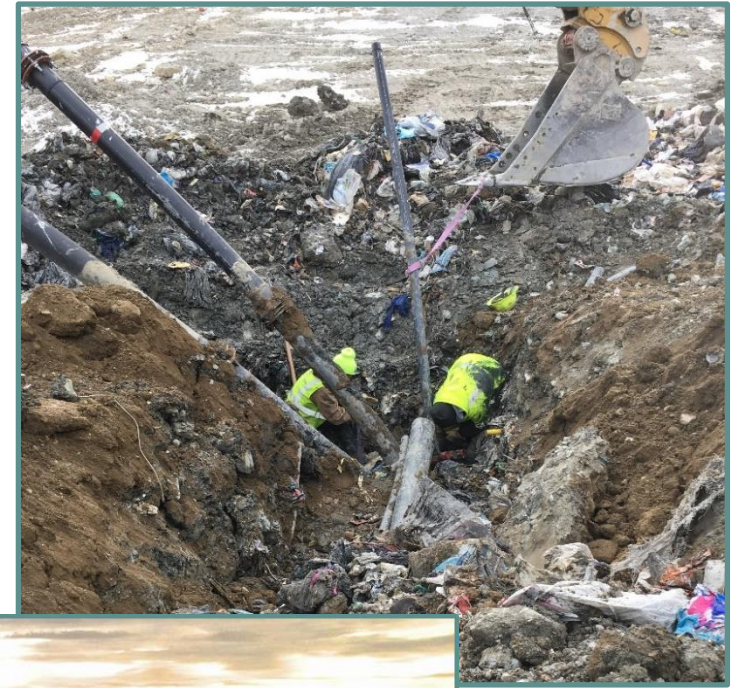
Confined Space Entry

- CSE 101
- Understand hazards
- Evaluate each situation & plan



Construction Activities

- Evaluate Conditions
 - Atmosphere
 - Footing
 - Equipment/Traffic



Power Tools

- Correct tool for the task
- Communication
- Training



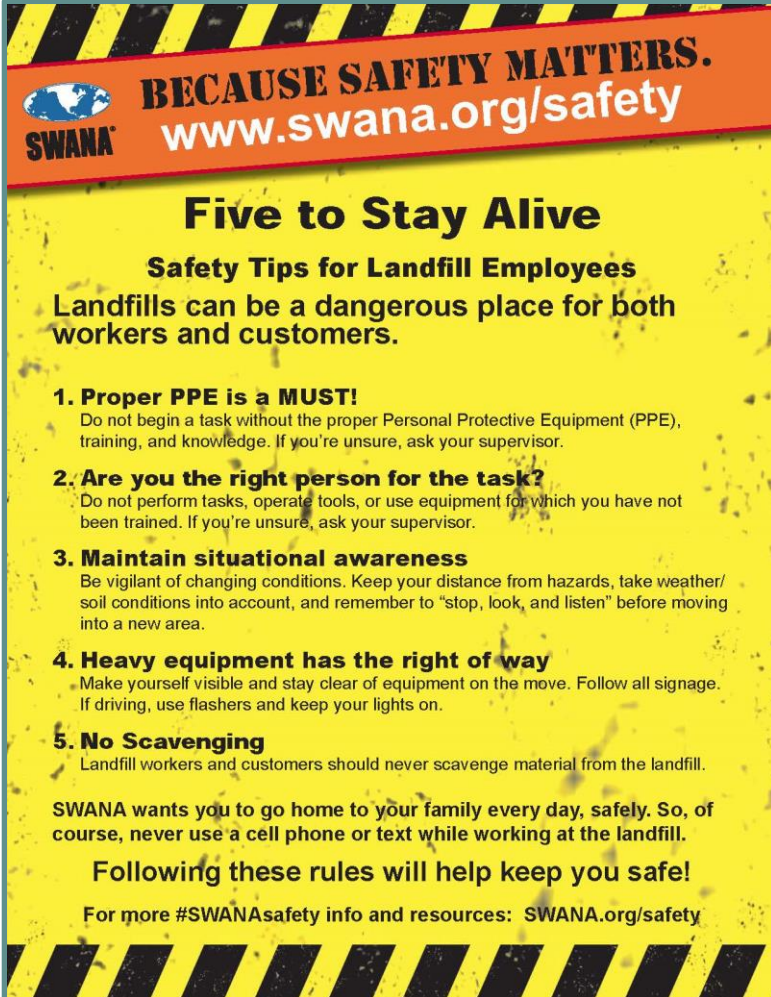
Often Overlooked Hazard!

- Atmospheric Conditions
 - Landfills are ever-changing environments
 - Better safe than sorry
 - Training
 - Create habits



Practicing a Safety Culture

- Always:
 - Situationally Aware
 - Stop Work Authority
 - Plan & Prepare
- Never put schedules, budgets or profits above the safety of themselves and others



SWANA **BECAUSE SAFETY MATTERS.**
www.swana.org/safety

Five to Stay Alive

Safety Tips for Landfill Employees
Landfills can be a dangerous place for both workers and customers.

- 1. Proper PPE is a MUST!**
Do not begin a task without the proper Personal Protective Equipment (PPE), training, and knowledge. If you're unsure, ask your supervisor.
- 2. Are you the right person for the task?**
Do not perform tasks, operate tools, or use equipment for which you have not been trained. If you're unsure, ask your supervisor.
- 3. Maintain situational awareness**
Be vigilant of changing conditions. Keep your distance from hazards, take weather/soil conditions into account, and remember to "stop, look, and listen" before moving into a new area.
- 4. Heavy equipment has the right of way**
Make yourself visible and stay clear of equipment on the move. Follow all signage. If driving, use flashers and keep your lights on.
- 5. No Scavenging**
Landfill workers and customers should never scavenge material from the landfill.

SWANA wants you to go home to your family every day, safely. So, of course, never use a cell phone or text while working at the landfill.

Following these rules will help keep you safe!

For more #SWANAsafety info and resources: SWANA.org/safety