

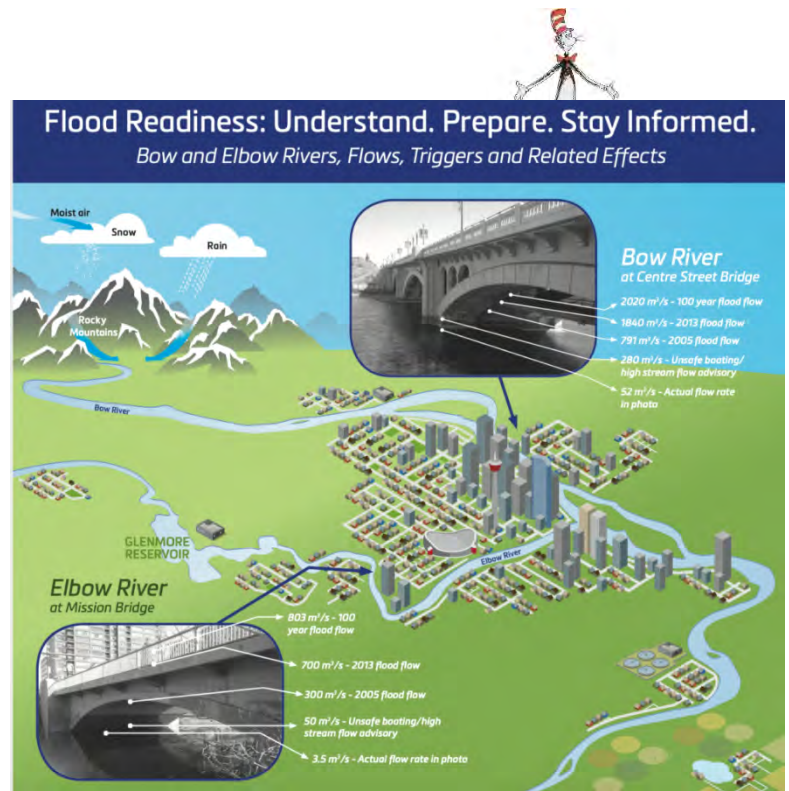


MANAGING THE SURGE AFTER THE FLOOD

City of Calgary



2013 CALGARY FLOOD





THE IMPACT



People

80,000 people in 32 communities evacuated
6,000 homes flooded

Infrastructure and Community

Over \$400M in initial damage and cost estimates

Bonnybrook wastewater treatment plant flooded

C-Train tunnels flooded, 16 stations closed, 22 bridges
and numerous roads closed

Services Impacted

35,000 ENMAX customers without power

Municipal Complex, 4,000 businesses, Calgary Zoo,
Saddledome, recreation facilities & schools



WRS EMERGENCY RESPONSE



EMERGENCY RESPONSE - COLLECTION AND LANDFILLS

Redeployed staff and equipment to focus on impacted areas

- Scheduling of Black Cart pickup changed for some Calgarians effected by the flood
- Blue cart collection was suspended to all Calgarians
- Calgarians were asked to store recyclable materials or take to CRD's



EMERGENCY RESPONSE - COLLECTIONS

- Our collection trucks were on the road 18 hours a day picking up flood-damaged materials.
- Our WRS staff also maintained regular garbage collection for the rest of the city.





DURING EMERGENCY RESPONSE



EMERGENCY RESPONSE - PROCESS CHANGES - HHW



- Electronics, appliances and household hazardous waste such as propane tanks, chemicals and paints were not accepted in the garbage but were be collected later from flood affected areas
- These materials could also be brought at no charge to the Throw 'N' Go areas of City Waste Management Facilities for proper disposal



EMERGENCY RESPONSE - CITY LANDFILL HOURS EXTENDED

- City WMF's hours were extended 7:30am to 9:00pm days a week for the public
- Open from 9:00pm – 11:00pm daily for City of Calgary Departments only.
- There was no charge to residential or commercial haulers.
- For residents not affected by the flood, we asked them to avoid using the WMF's.



Whitegoods & Refrigeration Units





FLOOD BY THE NUMBERS

98,900 – total tonnes of flood waste

1695 – tonnes of flood waste from High River

1435 – tonnes of waste from Siksika Nation

24,000 – number of loads of flood waste received at all three City of Calgary WMF's.

9000– number of flood damaged fridges received



QUESTIONS???