



Cooperative Approach to Defining Solid Waste Streams

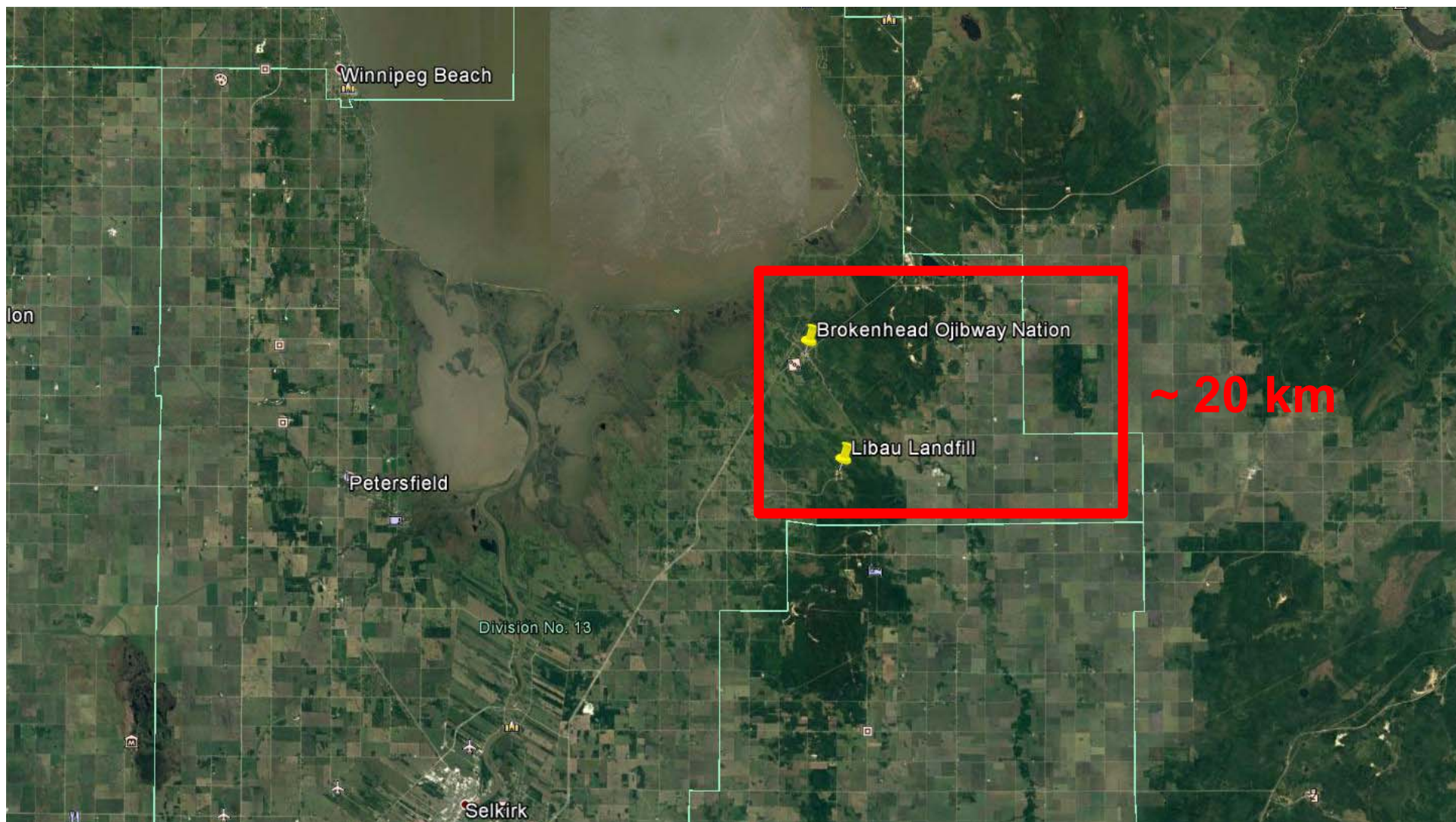
Presentation to SWANA NLC

May 22, 2019



Background

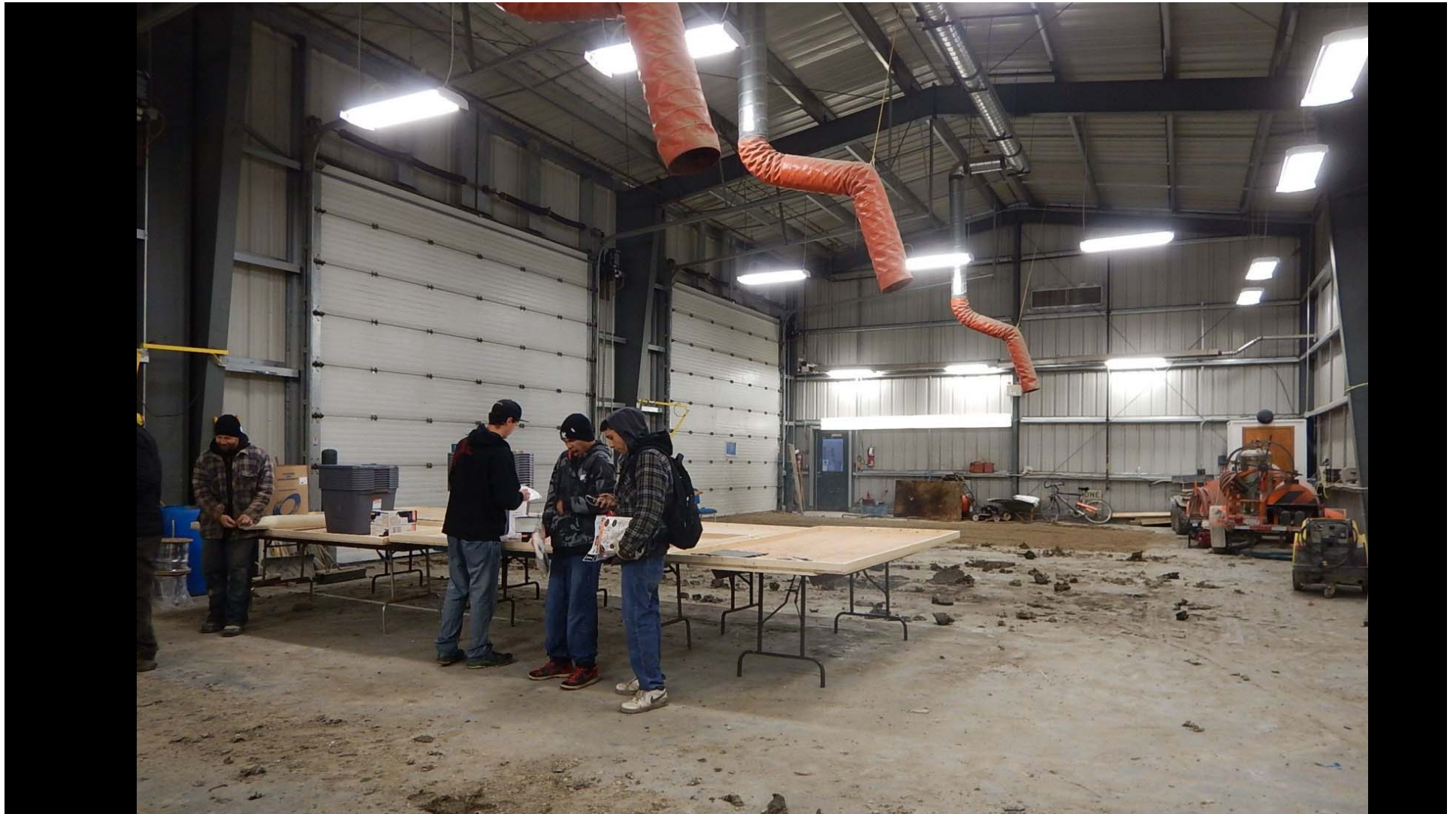
- On **March 18th, 2015**, KGS Group made a presentation to Brokenhead Ojibway Nation (BON) and RM of St Clements regarding considerations for recycling.
- KGS Group proposed a management program for BON.
- BON did not have an organized recycling program for its 600 residents.
- Proposed steps: **Waste Audit** and **Community Survey**

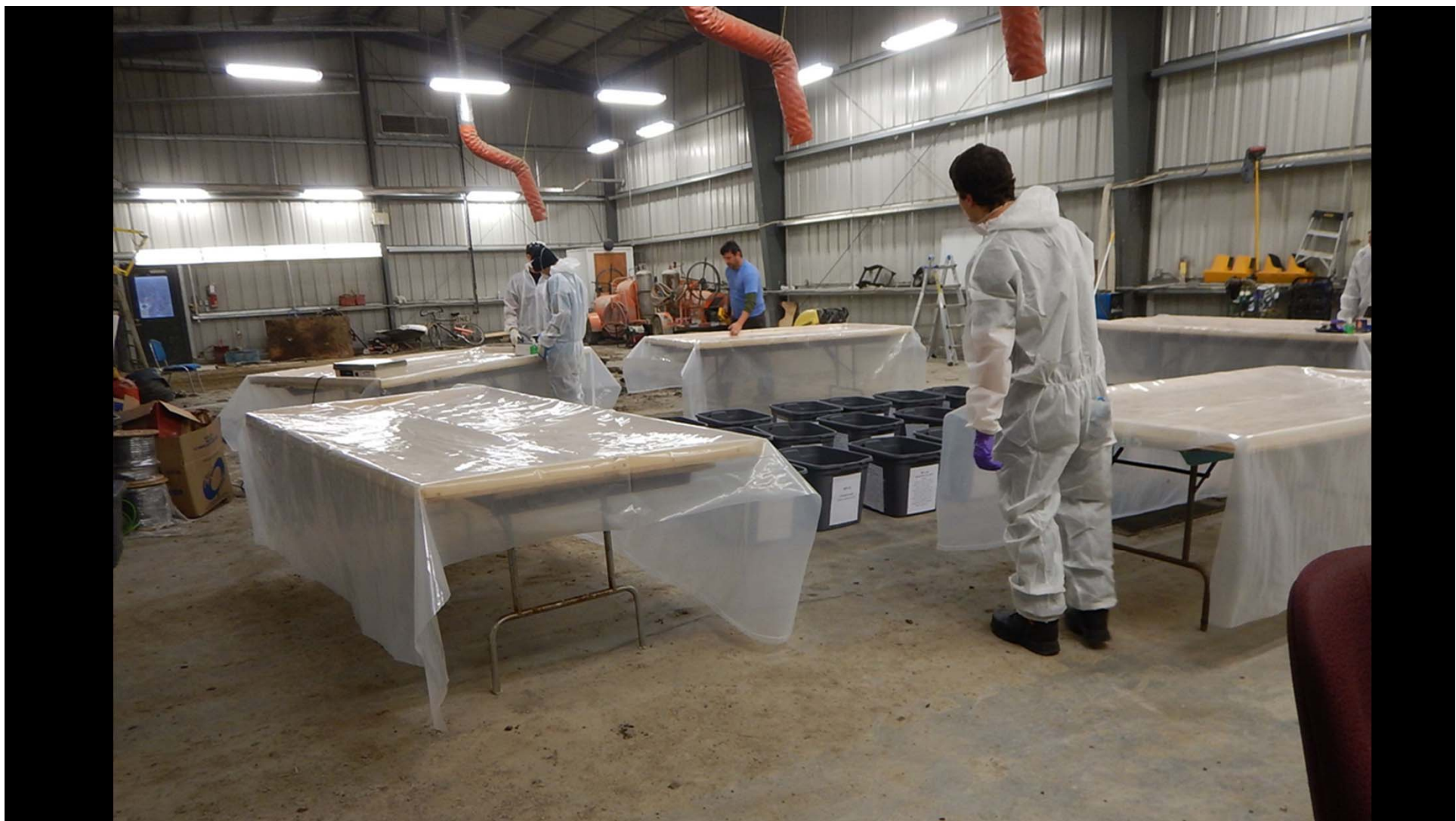


RM & BON Contributions

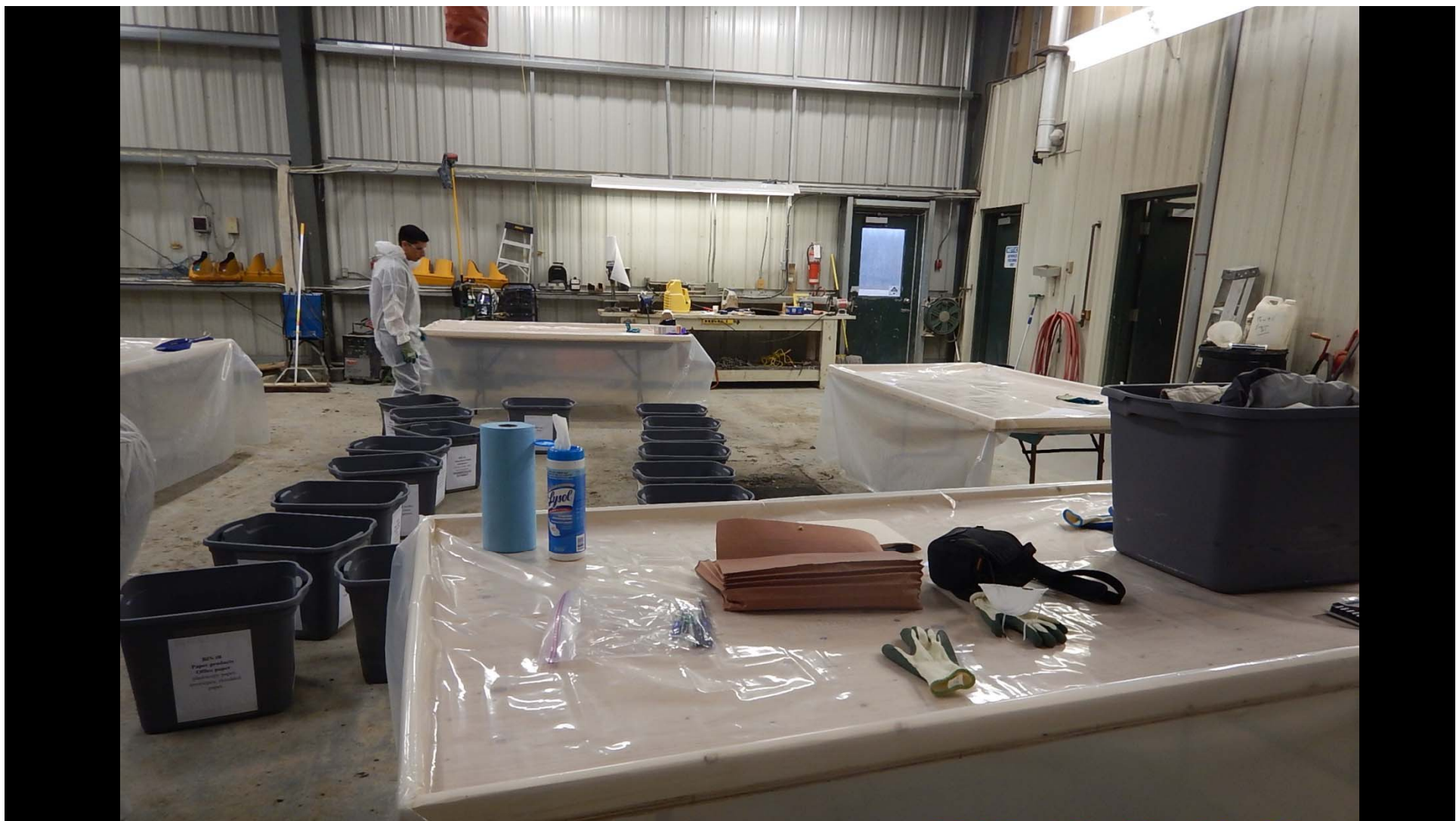
- Since the RM of St Clements was interested in developing its own Waste Diversion Program (WDP), and they own the landfill where BON transports its waste:
 - The RM provided the facility at the landfill to carry out the waste audit.
 - BON provided the personnel to conduct a waste audit and project funding.
 - KGS Group provided training, logistics, supervision and reporting.













CATEGORY	MATERIAL TYPE
1	Stainless steel food & beverage containers
2	Aluminum beverage containers
3	Aluminum food containers
4	Polycoat
5	Glass
6	Paper products: Boxboard/Mix paper
7	Paper products: Newsprint
8	Paper products: Office paper
9	Cardboard
10	#1 Plastics
11	#2 Plastics: Colored plastics
12	#2 Plastics: Milk and antifreeze jugs.
13	#4 and #5 Plastics
14	Compostable materials
15	Tires
16	Household hazardous waste
17	Scrap steel
18	Scrap aluminum
19	Scrap copper
20	Other scrap metal: brass and bronze
21	Treated wood
22	Burnable or chippable wood
23	Waste

BON WASTE



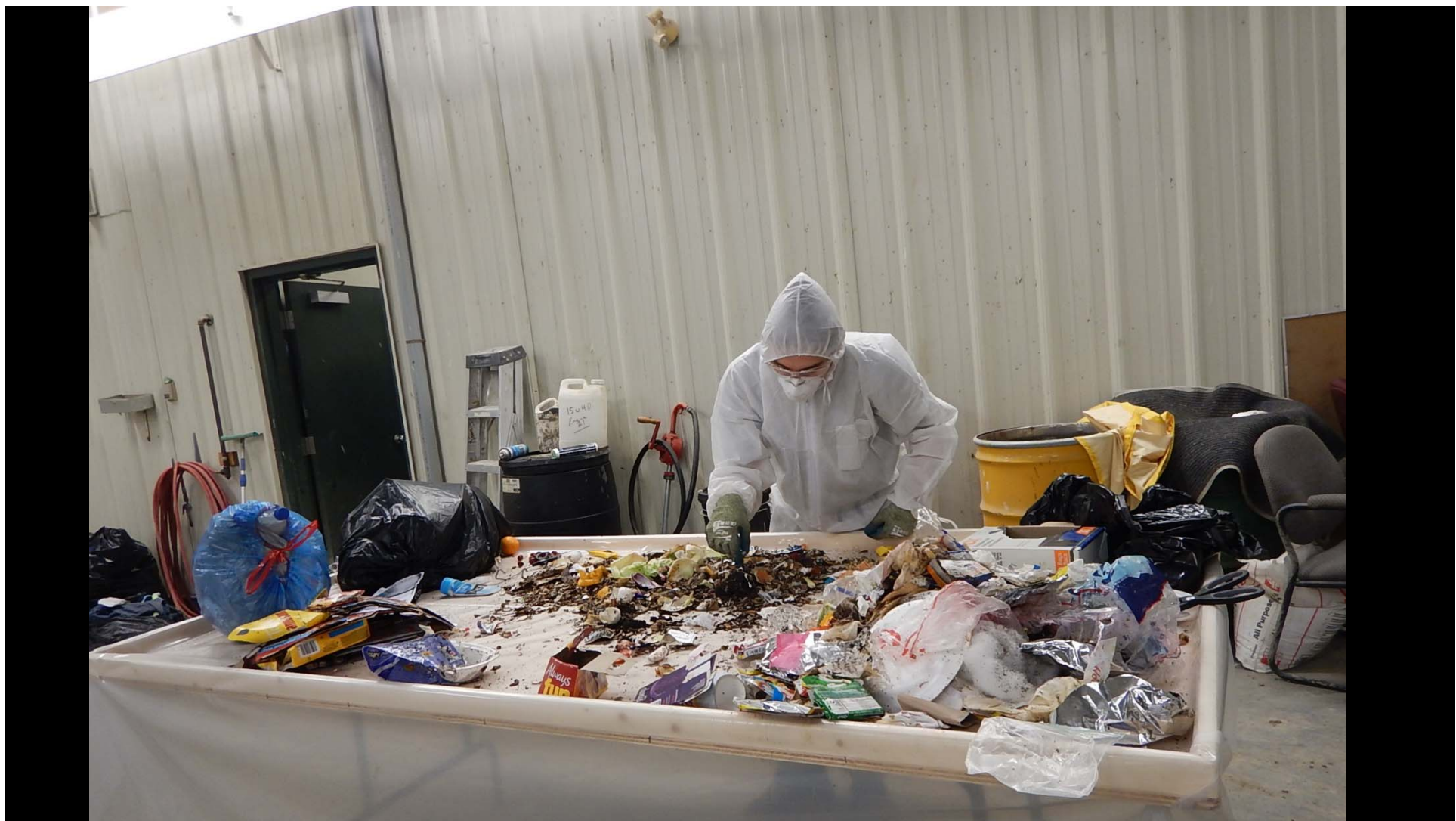


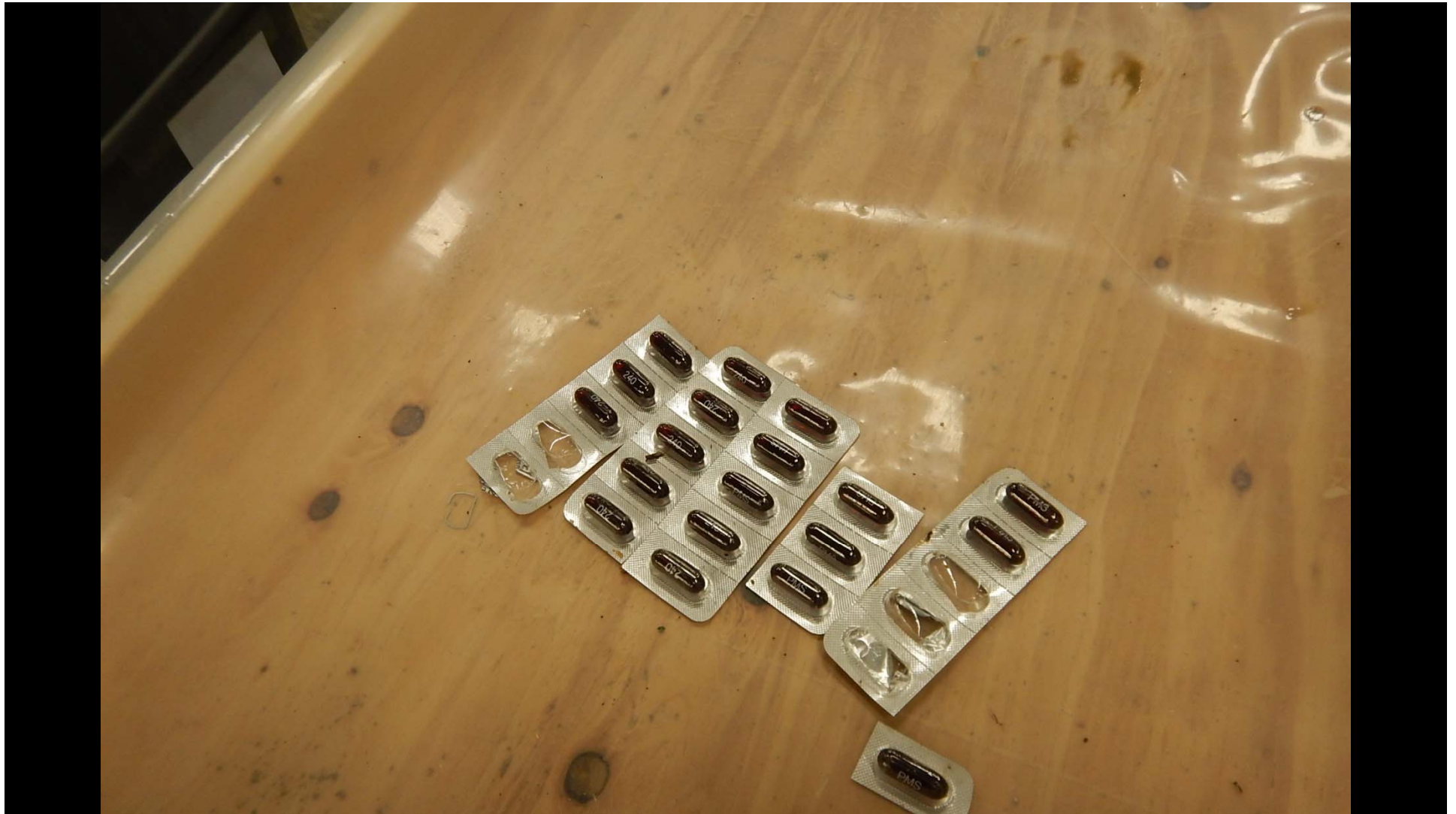












R.M. of St Clements Transfer Stations



^{st. clement.}
Bin's East to West

Dunning - ^{Ra's} 2860

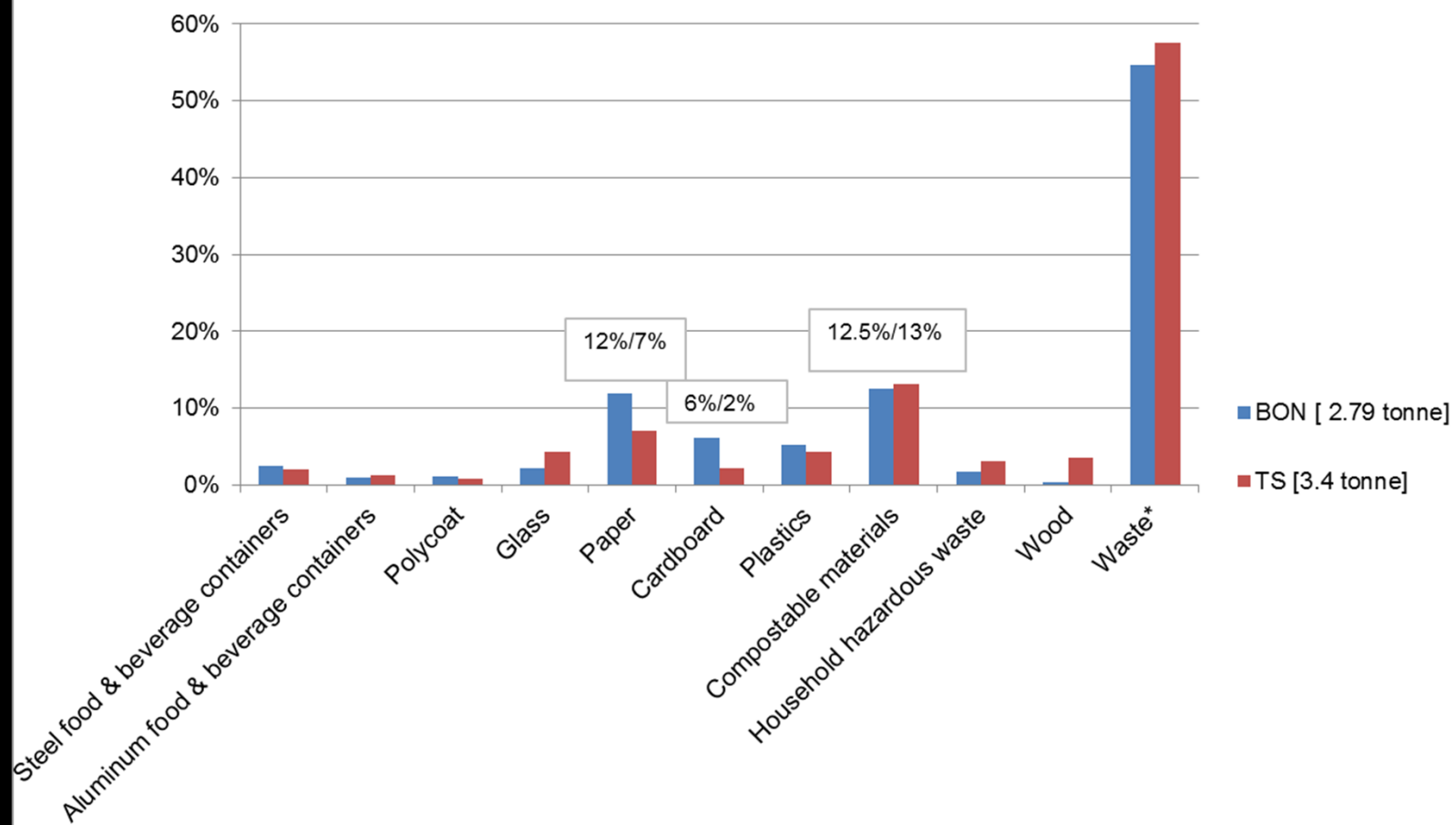
Clark - 4070

G.M. - 4620

^{Grand marais}
G.L. - 5840

^{Gould Lake.}

17390



7. Do you have any comments or ideas to improve the solid waste management in our community?

ensure the landfill site is accessible
year round and cleared of
garbage on the road ways

- a. If there is some revenue from this program, where would you like to see the money invested on? (ie. hockey ring, community garden, school programs, etc.)

School programs

- a. If yes, how long (ie. # of years) have you been burning garbage for?

just started and just cardboard

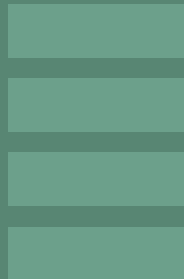
3. Where do you dispose of your daily household garbage? (ie. Landfill)

anywhere in the bushline





QUESTIONS?



Science | Imagination | Collaboration |