

# **Manitoba Emergency Measures Organization's Role in Emergency Events**

.....

**Ashley Keep**  
**Public Alerting Program Coordinator**  
**May 24, 2019**

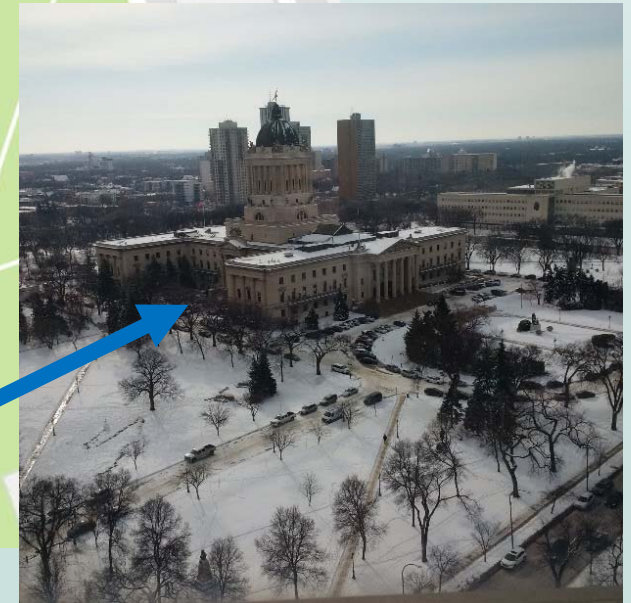
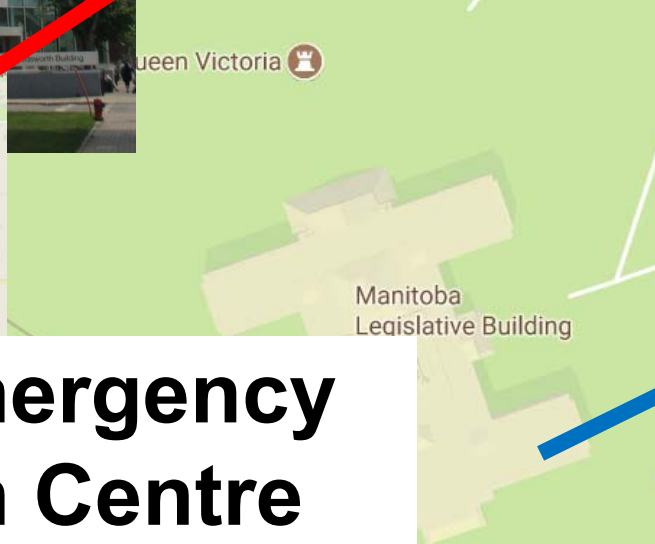
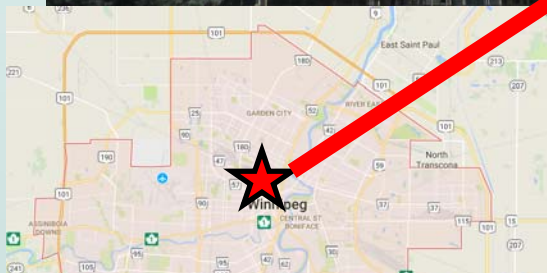
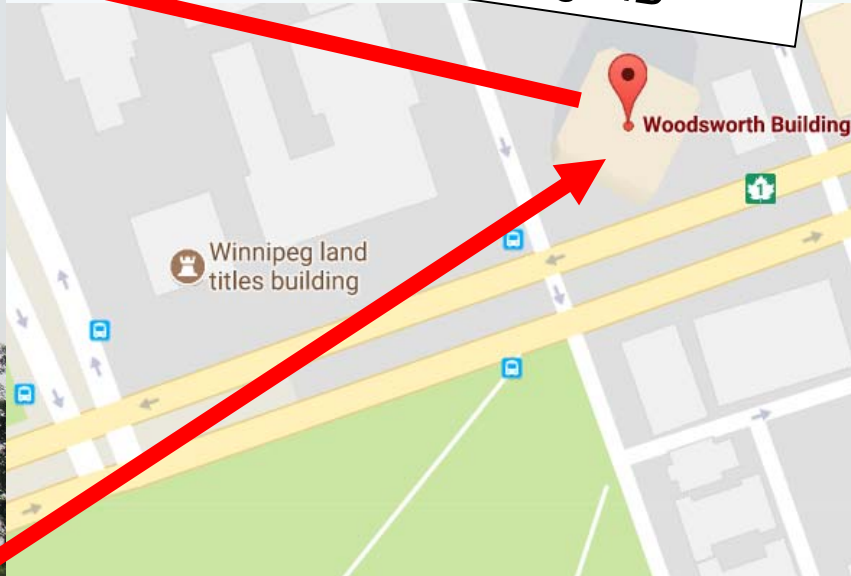


# Introduction

- Manitoba Infrastructure
  - Emergency Management and Public Safety Division
    - Emergency Measures Organization (EMO)

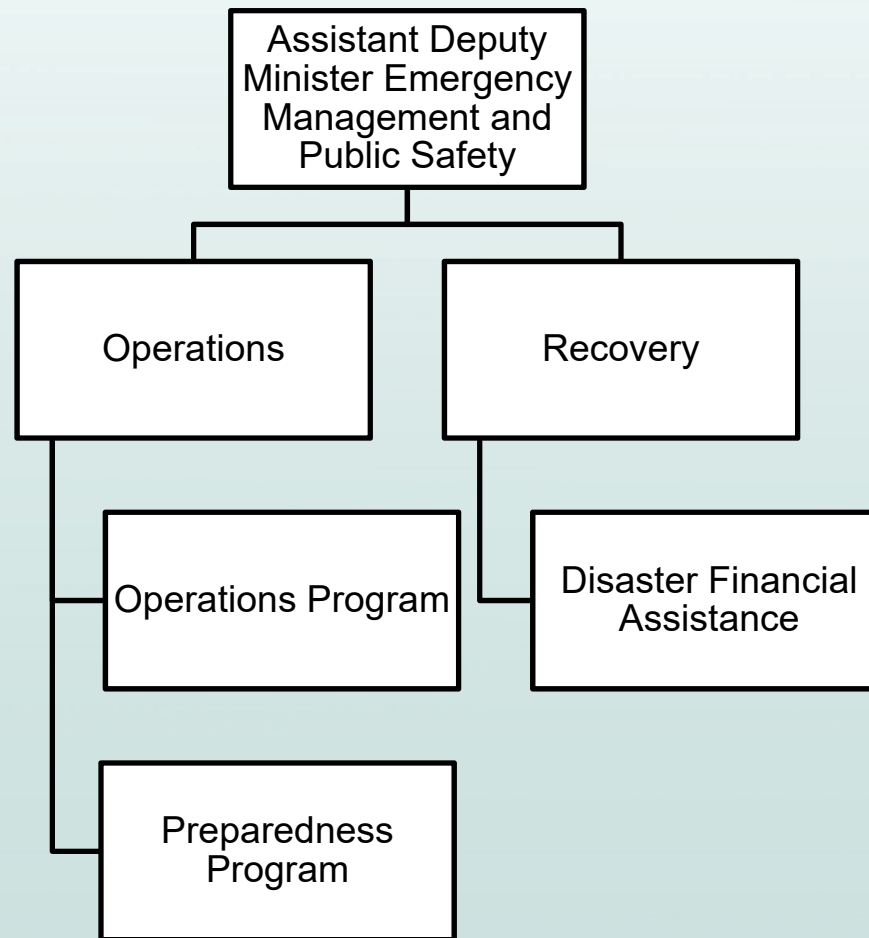


15<sup>th</sup> Floor, 405 Broadway, Winnipeg MB



# Manitoba Emergency Coordination Centre

# Manitoba Emergency Measures Organization



# Mandate

- The Emergency Measures Act:
  - Prepare a provincial emergency preparedness program and a provincial emergency plan
  - Conduct regular reviews and revisions of the program and plan
  - Establish and maintain a registry containing a copy of every emergency plan and emergency management program in the province



# Manitoba Emergency Plan

- All hazards coordination plan
- To coordinate Provincial response in a major emergency or disaster to prevent or limit:
  - Loss of life
  - Injury to persons
  - Damage to property or the environment
  - Significant economic loss or disruption

# Internal Emergency Management Partners

- OFC
- ERT
- Wildfire
- Health
- Families
- CSM
- Justice
- INR
- Agriculture



# External Emergency Management Partners

- Local Authorities
- Federal Partners
- Non-Governmental Organizations
- Industry and the Private Sector





# Recovery Section

- To facilitate, coordinate, and administer mitigation and recovery policy and programs
- Key activities:
  - DFA program
  - Recovery assistance and compensation programs
  - Policies and guidelines
  - Training and education

# Operations Section

- Two distinct program areas:
  - Preparedness Program
  - Operations Program



# Preparedness Program

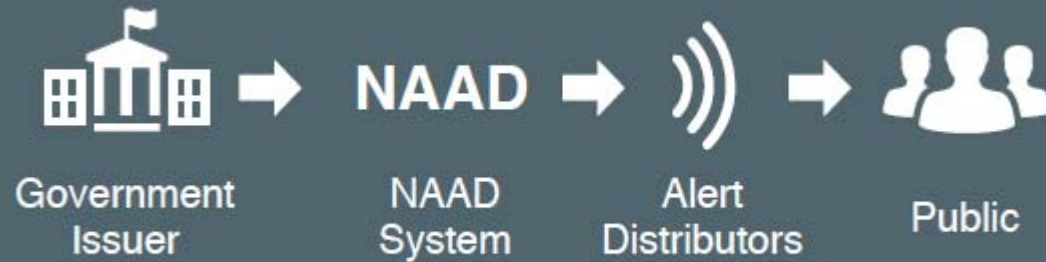
- Training Program:
  - EM course development and delivery
- Emergency Management Advisors:
  - Work with local authorities on planning and response
  - Stakeholder engagement
  - Public education
  - Liaison Officer

# Operations Program

- EMO Duty Officer
- Operate the Provincial MECC
- Emergency Alerting Program
- Situational Awareness Program
- Contingency Planning



# Emergency Alerting Program



# Types of Emergency Alerts

- **Broadcast Immediate Alerts**
  - Situation that present an imminent or expected threat to life safety
- **Advisory Alerts**
  - Lower level of urgency, severity and certainty

# Alert Ready – Alerting Platforms

- Radio broadcast
- Cable and satellite television
- Compatible wireless devices

EMERGENCY ALERT/ALERTE  
D'URGENCE

Alert message text /// Texte du  
message d'alerte

OK

# TV and Radio

- **TV/Radio Sound:**
  - Plays Canadian Alert Attention Signal, followed by the alert message
- **TV Appearance:**
  - Full screen or crawler
  - Red background with white text

## **EMERGENCY ALERT**

Page 1 of 2

Alert message text

Un message français suivra.



# Wireless Public Alerting (WPA)

The standard specifies:

- Canadian alerting attention signal, vibration cadence, and alerting message
- Alert in English  
(French upon translation)
- Geo-targeted



# Wireless Public Alerting

- Effective April 6, 2018
- Compatible wireless devices on LTE networks:
  - An LTE smartphone
  - Up to date operating software
  - Connected to LTE cellular network at the time the alert is issued

**THINGS THAT CAN  
SAVE YOUR LIFE.**

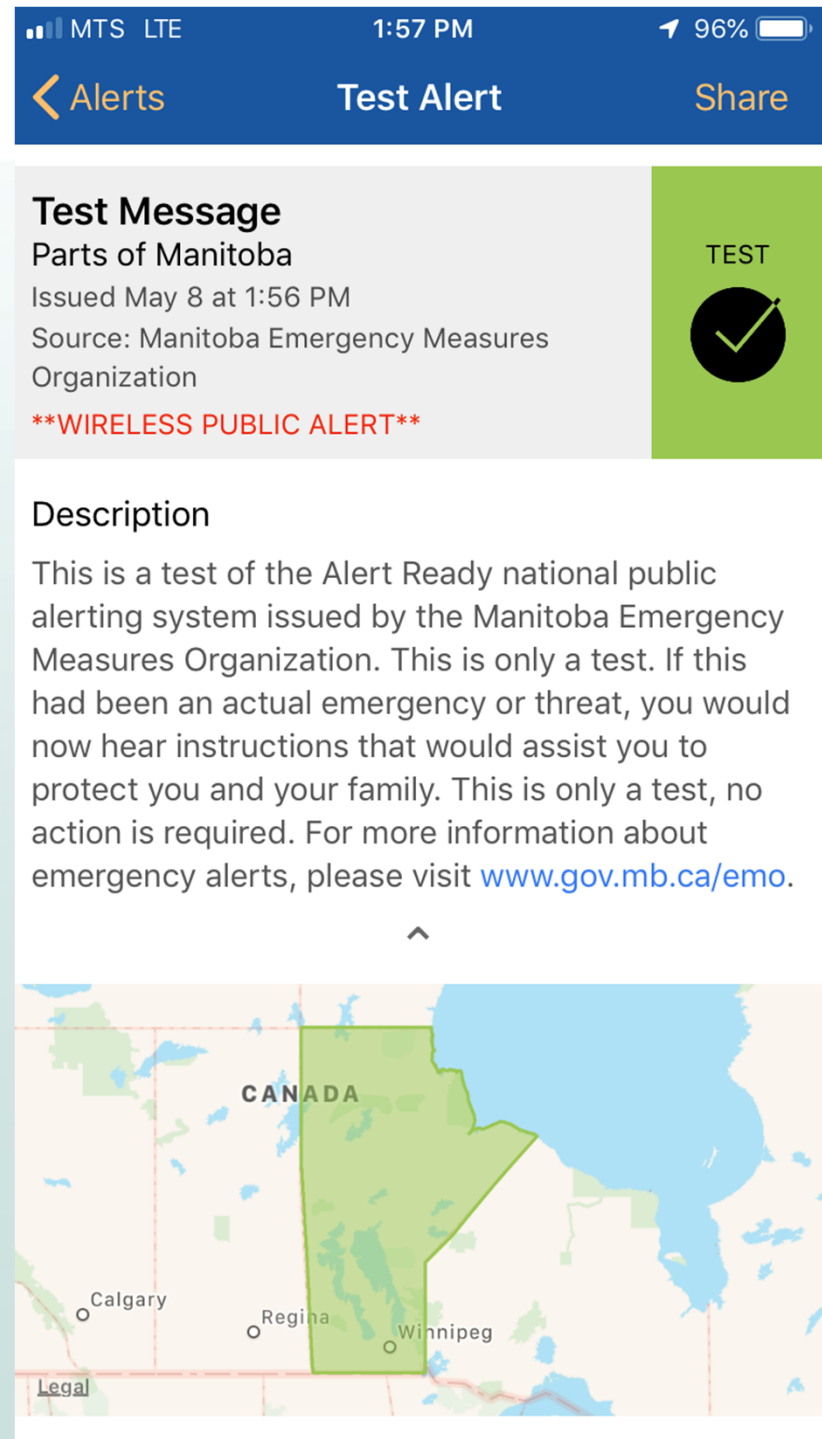
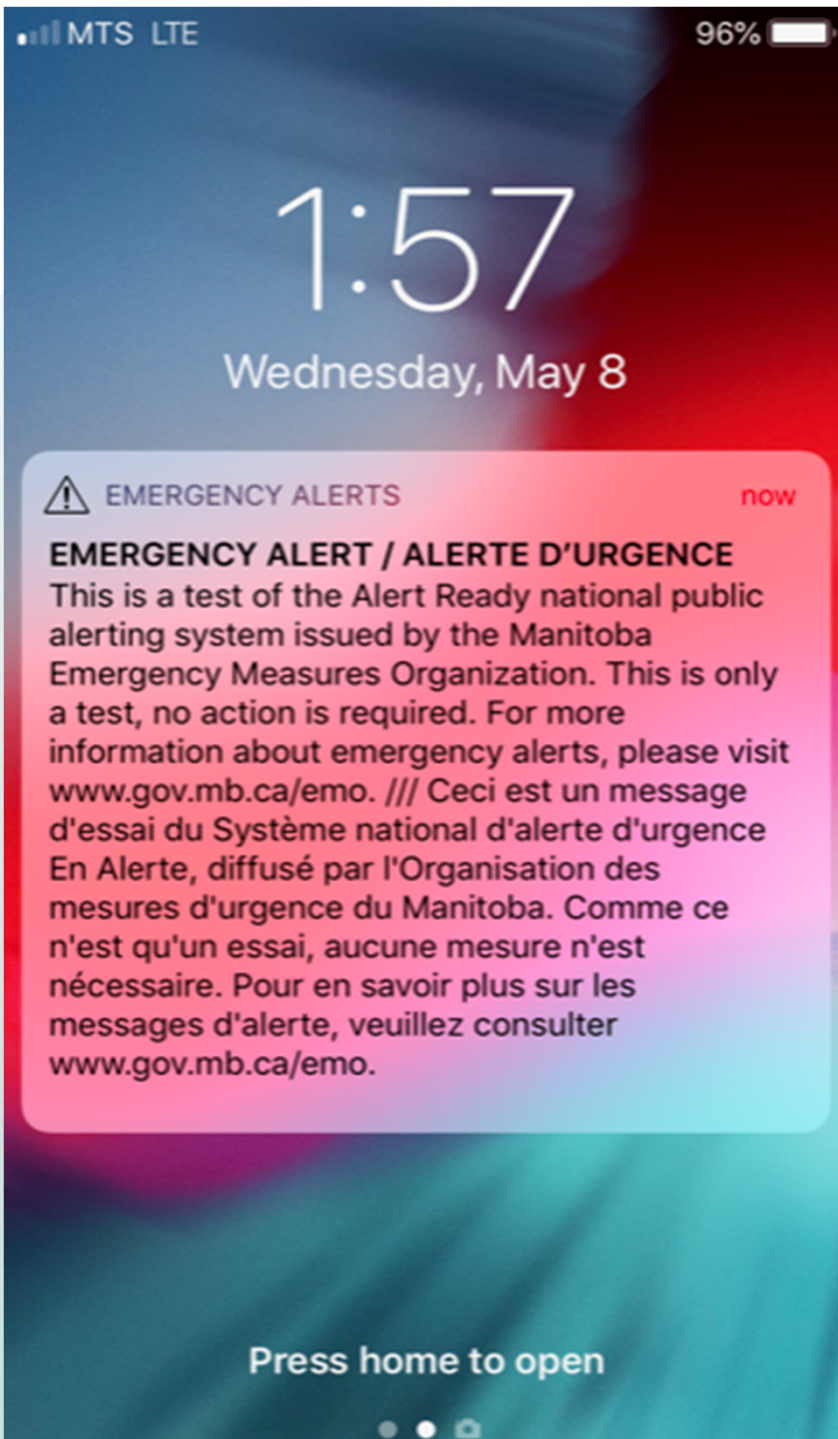


**YES, YOUR CELL PHONE.**

**LIFE-SAVING ALERTS.  
NOW SENT TO YOUR CELL PHONE.**

**CHECK COMPATIBILITY AT  
[ALERTREADY.CA](http://ALERTREADY.CA)**





# Emergency Alerting Program in Manitoba

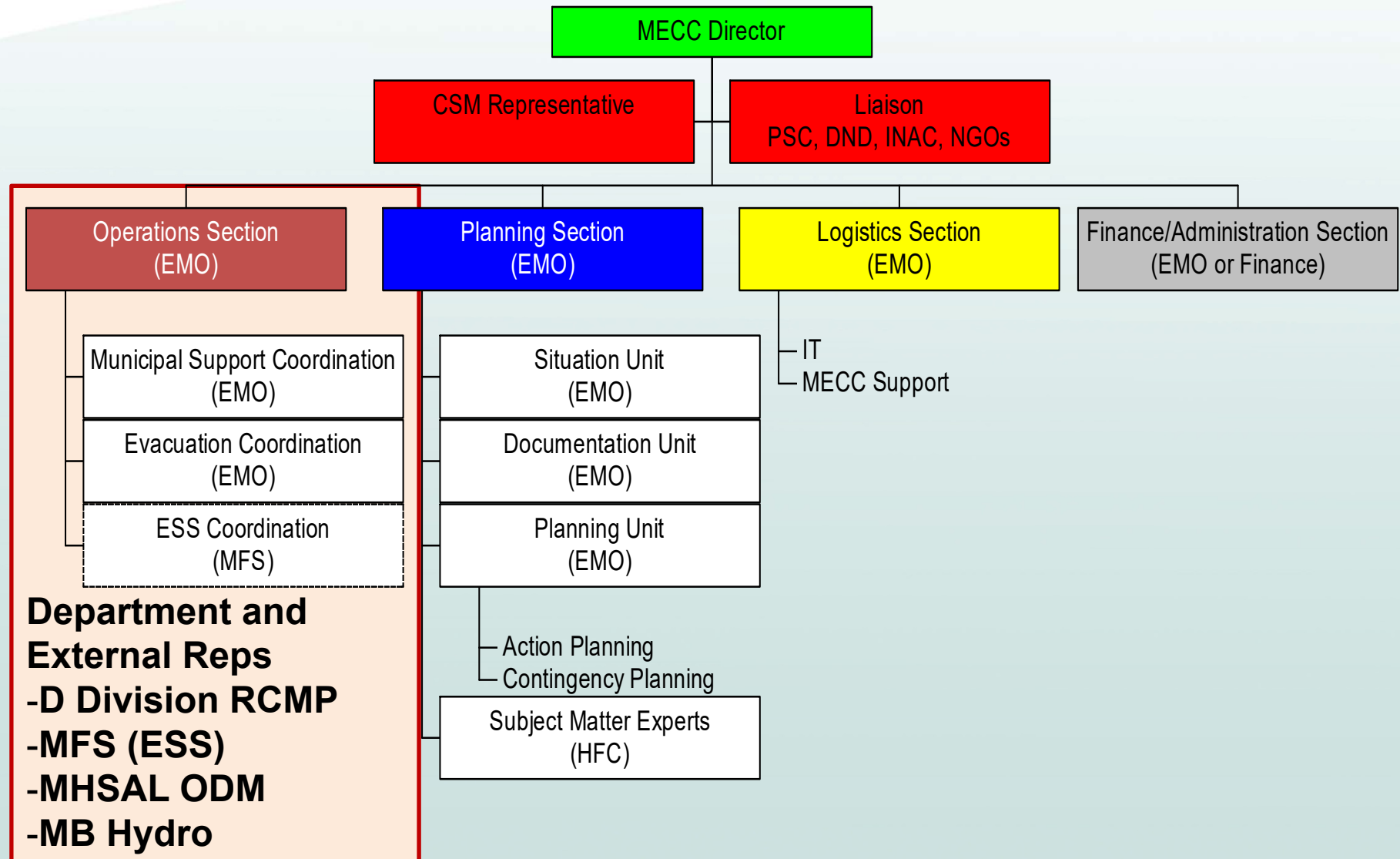
- Develop a de-centralized system
  - Alerts issued by government departments, agencies, municipalities, and local authorities
- Increase public education and awareness



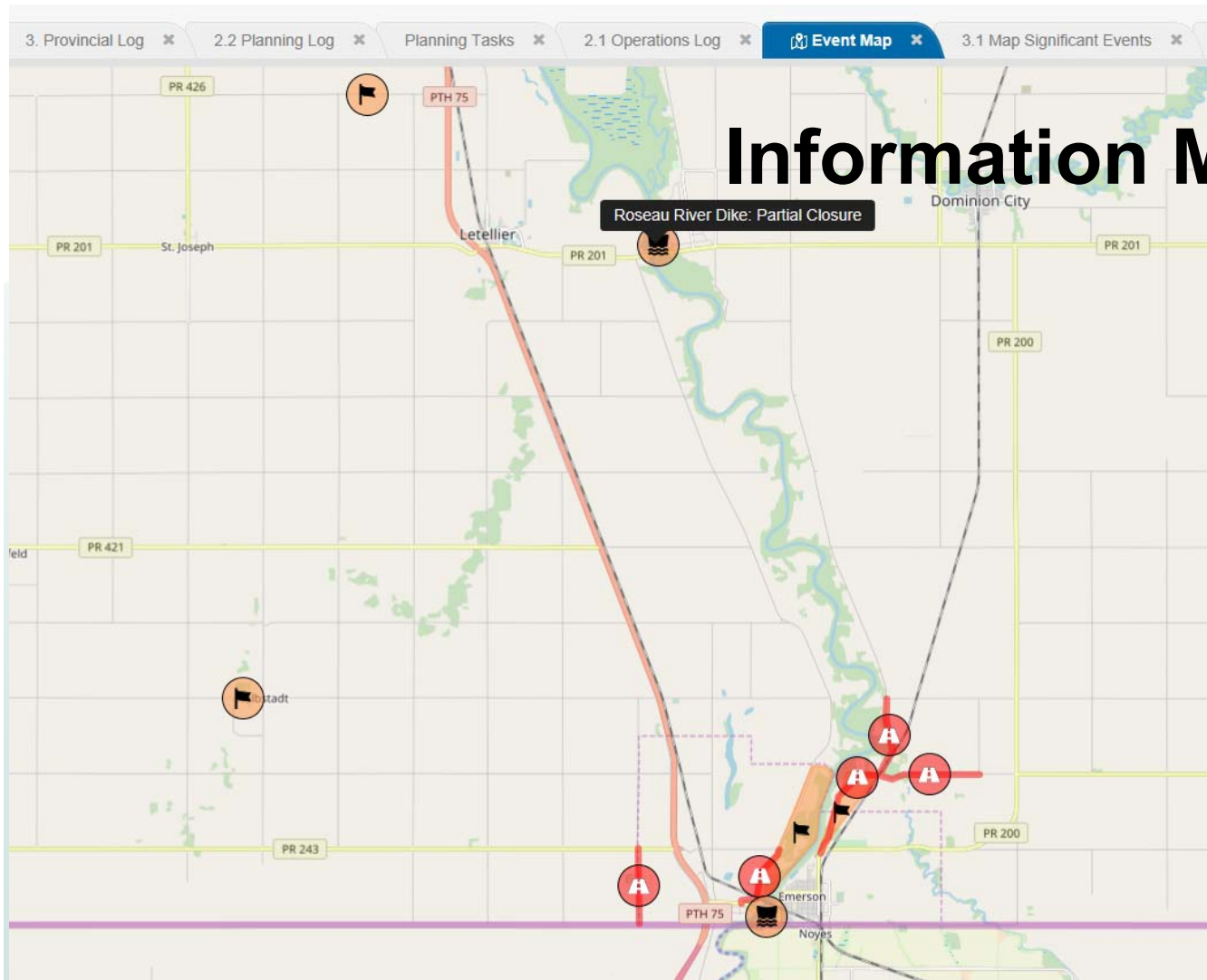
# Manitoba Emergency Coordination Centre (MECC)



# MECC Organization



# Information Management WebEOC



Assiniboine to less than 5,000 cfs. The current flow down the Portage Diversion Assiniboine River over the new several days.

ximately 10,000 – 12,000 cfs around the middle of April. The operating strategy  
eak flow on the Lower Assiniboine River to no more than 10,000 cfs. However,  
ther reductions on the Lower Assiniboine River may be required to maintain a  
e peak flows close to those experienced in the spring of 2011.

Shared w Munic/Comm: no

: 3: Location: Portage Diversion

 Edit

Zone 1 spotters took a number of photographs from 1,000' showing the state of

Shared w Munic/Comm: no

2: 3: Location: Red River Valley

 Edit

ture staff have begun patrolling dikes along the Assiniboine River during daylight hours until flows reach 7500 cfs or if there is a major ice run observed.

If you witness a dike breach or overtop, please call the EMO Duty Officer at 204-945-5555. Once the EMO Duty Officer is notified, the affected local authority will be notified.

Name: Allyson Demski

Date: 04/04/2019 11:37:31

Position: MECC-EMO Duty Officer

Record #: 93

Att: 1: 2: 3:

Shared w Munic/Comm: **yes**

Location: Lower Assiniboine River



WebEOC 7.2

Victoria Krahn as ~EMO-PlannerWebEOC Log Off

2010 - #3 - June Fires

Boards

EmerGeo Enabled Board

EmerGeo Enabled Board

EMO Planning Log

EMO Recovery Log

Hot Board

Hot Board (Admin)

Main Event Log

Main Event Log (Admin)

Mission/Task

Provincial Log

Provincial Log (Admin)

xECC Position Log

xEMO REM Log

Menus

FEMA Forms »

Reports/Photos »

Reports/Photos (Admin) »

Tools

Admin

Chat

Contacts

Messages

Plugins

File Library

Links

Fire Maps

Fire Update Report - Public Version

Manitoba Flood Forecast Reports

Manitoba Flood Sheets

Manitoba Road & Traveller Information

Winnipeg River Levels

Provincial Log Display - Windows Internet Explorer

Event: 2010 - #3 - June Fires

Provincial Log

View Map Print All Search

Date/Time: 06/29/2010 11:11:36

Position: ECC-ESS

Original Ron log by: Fortier

Record: 1680

Phone Call to Mark Francis to talk about the possibility of the 75 Cranberry Portage (CP) evacuees who remain in The Pas (10 at Wescana Hotel and 65 at UCN) returning home to CP. Larry Johnson (EOC Manager) for CP has a day off.

Mark advises he has a meeting with the Fire Program's Incident Commander this afternoon. The fact of the matter is until Conservation feels they have full control of the West flank, and there is no further imminent danger of losing the west flank (ie: sudden change in wind direction), then the voluntary evacuation order will likely not be lifted.

Attachment: Address/Location: ~ Print

Date/Time: 06/29/2010 11:16:02

Position: ~EMO- Planning Coord~

Original Victoria log by: Krahn

Record: 1679

Fire Update - June 28, 2010

5 new fires yesterday. Strong southeast winds with no precipitation expected for the next few days will challenge fire fighting efforts. It continues to be very dry in many areas of northern Manitoba

East Region - All quiet, no new fires no issues.

Northeast Region

1 fire near Thompson airport - successfully initial attacked - no concerns.

1 fire near Island Lake - successfully initial attacked - no concerns.

<<<< << Page 2 of 5 Disable Refresh >> >>>>

EMO Planning Log Display - Windows Internet Explorer

Event: 2010 - #3 - June Fires

Planning Log

New Entry View Map Print All Search

Date/Time: 11/03/2010 09:31:17

Position: ~EMO- Planning Coord~

Original Victoria log by: Krahn

Record: 649

Attached is the After-Action Report for Fire #24.

Attachment: Address/Location: ~ Update/Remove Print

Date/Time: 07/09/2010 15:04:10

Position: ~EMO- Planning Coord~

Original Victoria log by: Krahn

Record: 648

Fire Update - July 9, 2010

Two new fires yesterday caused by lightning. All travel restrictions have been temporarily lifted due to recent rainfall, but may have to be reinstated again depending on future rainfall. Limited precipitation still in the forecast for much of Northern Manitoba

Eastern Region

No new fires.

<<<< << Page 1 of 1 Disable Refresh >> >>>>

Mission/Task Display - Windows Internet Explorer

Event: 2010 - #3 - June Fires

Mission / Task

New Entry

My Tasks My Requests All Completed/Closed Open Search

Originator Date/Time Requested	Description/Response	Assigned To	Time Due/ Completed	Status	Att	Edit
EMO-Recovery Dir Lee Spencer	<p>Desc: Ministerial Inquiry. What is the status of the evacuees from Cormorant?</p> <p>Loc:</p> <p>Details:</p> <p>Contact: Lee</p> <p>Response: Bev called me this am to confirm that all but one person has returned from the original 19 evacuees. The one remaining person will be returning on Wed June 30, 2010.</p> <p>Update by Lee Spencer at 09:12:28 on 6/29/2010</p>	ECC-Command	06/28/2010 13:48:00	Closed		Edit

<<<< << Page 1 of 1 Disable Refresh >> >>>>



# Mobile Emergency Coordination Unit





# Types of Events

- Floods
- Wildfire/Industrial Fires
- Significant Weather Events
- Hazardous Materials



# Provincial Flood Response

- Primary Department:  
**Manitoba Infrastructure**
  - *Water Management & Structures Division*
    - Forecasting and water management
    - Provincial flood control and mitigation
    - Subject matter expertise for infrastructure protection, survey, etc
    - Provincial flood protection resources

# Information Management

- SITREP Input
  - Updates on activities
  - Identify impacts to:
    - healthcare system
    - education system
    - transportation network
    - critical infrastructure
    - energy
    - telecommunications
    - agriculture industry





# Otterburne Pipeline Explosion January 2014

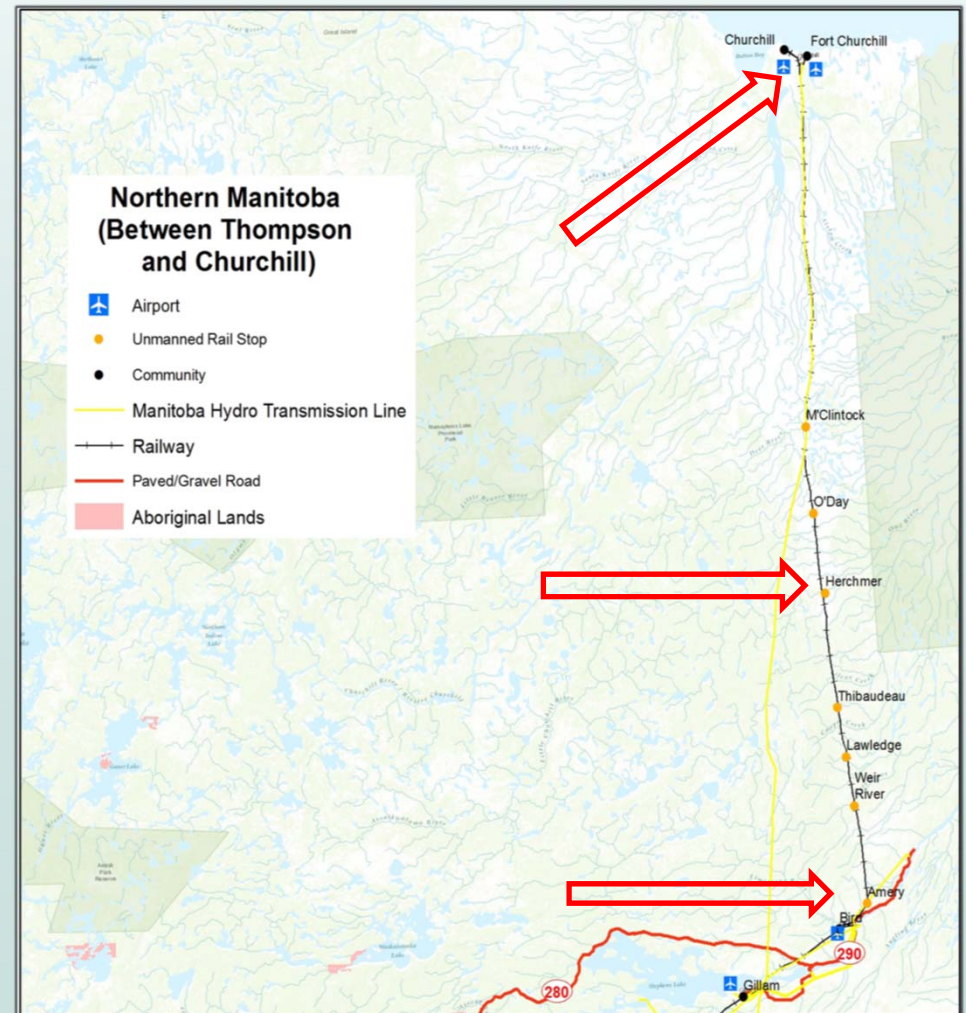




# Churchill Rail Service Disruption

## May 2017 – December 2018

HBR Herchmer Subdivision sustained extensive flood damage in May 2017 and rail service between Gillam and Churchill was suspended









# Questions?

**Ashley Keep**

Manitoba EMO

Phone: (204) 945-4772

Email: [ashley.keep@gov.mb.ca](mailto:ashley.keep@gov.mb.ca)

Website: [www.gov.mb.ca/emo](http://www.gov.mb.ca/emo)

